



OUR INTEGRATION — YOUR SUCCESS ARPAC LLC

9555 W. Irving Park Road

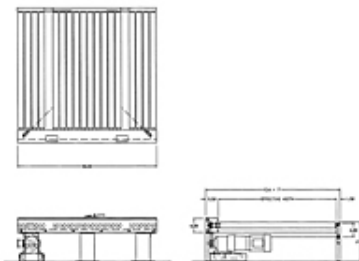
Schiller Park, IL 60176

Phone: 847-678-9034 • Fax: 847-671-7006

Email: info@arpac.com

Item # FP 2020, 5' Chain Driven Live Roller Conveyor with Floor Supports

While ARPAC's Palletizers are complete for most applications, we know that many customers have special requirements and we are ready to handle them. A wide variety of Pallet Handling and Product Handling Accessories are available to meet your specific application requirements.



STANDARD SPECIFICATIONS

- Conveyor - 5' long interfaces with FP 1020 chain transfer to effect a right angle transfer using a 48" x 40" pallet
- Frame - 3/16" formed 6" channel with welded 2" x 2" x 1/4" cross members
- Frame Width - Effective widths 42", 45", 51", 54"
- Rollers - 2-1/2" OD x 11 GA with 2 welded sprockets on each roll. Rollers are on 3" centers and have 11/16" HEX shaft. Roll to roll chain drive is #40 1/2" P chain
- Elevation - 17" T or for use with FP 1020 transfer
- Motor - 1 HP C-face 230-460VAC motor
- Roller Speeds - 45 & 60 FPM available
- Load Capacity - 4000 # load