



OUR INTEGRATION — YOUR SUCCESS ARPAC LLC

9555 W. Irving Park Road

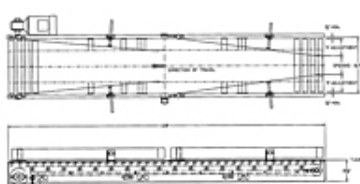
Schiller Park, IL 60176

Phone: 847-678-9034 • Fax: 847-671-7006

Email: info@arpac.com

Item # BC 1000, Belt Driven Live Roller - 1.9" Rollers

While ARPAC's Palletizers are complete for most applications, we know that many customers have special requirements and we are ready to handle them. A wide variety of Pallet Handling and Product Handling Accessories are available to meet your specific application requirements.



STANDARD SPECIFICATIONS

- Std. Lengths - 7 ft., 10 ft.
- Std. Widths - (B-F) 15", 21", 24", 28"
- Std. Widths - (OAW) 17-1/2", 23-1/2", 26-1/2", 30-1/2"
- Frames - 8" x 10 GA x 1-1/4"
- Rolls
- Carrying - 2-1/2" Dia. x 16 GA GP 7/16" Hex on 3" Ctrs
- Pressure - 1.9" Dia. x 16 GA GP 7/16" Hex on 6" Ctrs, Cam Adjusted
- Return - 1.9" Dia. x 16 GA GP 7/16" Hex on 6" Ctrs, Cam Adjusted

- Drive Pulley - 6" crowned & belt lagged pulley with shaft mounted reducer and C face motor
- TE Pulley - 4" Dia. pulley crowned with 1-3/16" Dia. Shaft
- Driving Belt - PVC belting #125 12" wide friction surface both sides 5/32" thick with clipper lacing
- Snub Idler - 2" pulley, screw adjustable
- Guards - 6" formed channel 10 GA
- Min. Elev. - 10-1/2"
- Bearings - Sealed pre-lubricated with cast iron housing
- Motor - Std. 3/4 HP, 230/460V, 3 PH, 60 Hz
- Speed - 120 FPM
- Capacity - 150 lbs/ft.
- Supports - 3-1/2" channels adjustable, one support at each end

