

Capsule Gauge for Low Pressure

KPChE 63

Stainless steel, snap-in window

Standard Versions

Information on general and metrological features (load limits / temperature-resistance, among others) and standard pressure ranges / scale divisions can be found in model overview 6000.

Accuracy (EN 837-3)

Class 1.6

Case

1.4301 (304 stainless steel), with snap-in window

Case Protection Type (EN 60 529 / IEC 529)

IP 32

Nominal Case Size

63 mm (2½")

Wetted Parts

Type – 1: Connection: brass
Diaphragm capsule: CuBe-alloy
O-ring sealing: NBR

Type – 3: Connection: stainless steel 316 SS
Diaphragm capsule: stainless steel 316 SS
O-ring sealing: FPM

Case Configuration

Connection: screwed
Position of the connection: bottom connection,
optional centre back connection (**rm**)
Mounting device: without, optional back flange for
surface mounting (**Rh**), see page 2

Pressure Ranges (EN 837-3)

0 – 25 mbar (0 – 10 "WC) to 0 – 600 mbar (0 – 250 "WC)

Process Connection

G ¼ B (¼" BSP)

Window

Polycarbonate, snapped in case

Movement

Brass / German silver for type – 1
Stainless steel for type – 3

Dial

Aluminium white, scaling black

Pointer

Aluminium black

Zero Adjustment

Frontsided, after removal of window



Ordering Information, Standard Pressure Ranges, Options

See pages 3 and 4

Special Versions and further Options among others

- Other process connections upon request
- Other pressure ranges and / or special scales, e.g. dual scale mbar/kPa, coloured fields or ranges, dial inscriptions, negative scale etc.
- Case parts 316 L stainless steel (1.4404) upon request
- Wetted parts free of grease and oil for type – 3 upon request
- Oxygen version for type – 3
- Position of the connection radial at 3 o'clock, 9 o'clock, 12 o'clock (others upon request) or position of connection other than vertical installation (90°)
- GOST-version for Russia, Ukraine, Kazakhstan

Accessory

See catalogue heading 11



Sales and Export South, West, North

ARMATURENBAU GmbH

Manometerstraße 5 • D-46487 Wesel-Ginderich
Tel.: +49 (0) 28 03/91 30-0 • Fax: +49 (0) 28 03/ 10 35
armaturenbau.com • mail@armaturenbau.com

Subsidiary Company, Sales and Export East

MANOTHERM Beierfeld GmbH 6211.1

Am Gewerbepark 9 • D-08344 Grünhain-Beierfeld
Tel.: +49 (0) 37 74/58-0 • Fax: +49 (0) 37 74/58-545
manotherm.com • mail@manotherm.com

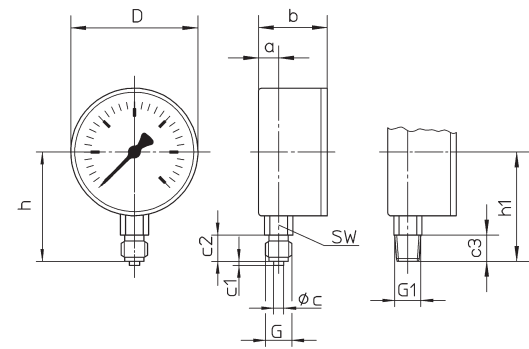
02/14

Case Configurations, Code Letters, Dimensional Data and Weights, Blow-out Device

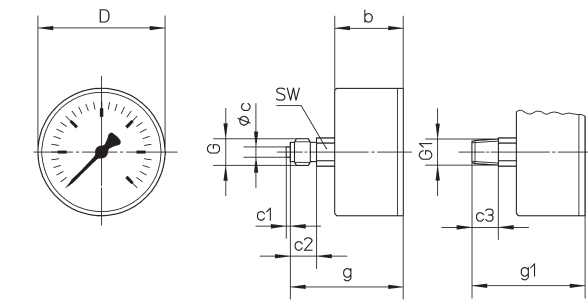
Bottom Connection Centre Back Connection

no mounting device

(no additional code letters)

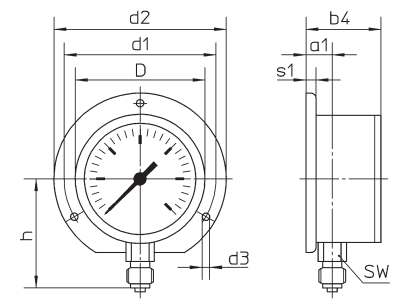


code letters: **rm**

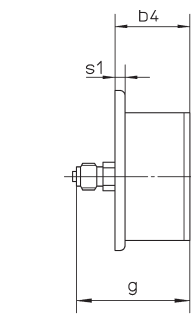


with back flange for surface mounting

code letters: **Rh**



code letters: **rmRh**



(available upon request, but not recommended according to EN 837-3)

Dimensional Data (mm/ inches) and Weights (kg/ lb)

| NCS | a | a1 | b | b4 | c | c1 | c2 | c3 | D | d1 | d2 | d3 | G | G1 |
|------------|----------|-----------|------------|------------|---------|----------|-----------|-----------|------------|------------|------------|------------|----------------------------|--------|
| 63 2½" | 10 .4 | 13 .51 | 34 1.34 | 37 1.46 | 5 .2 | 2 .08 | 13 .51 | 13 .51 | 62 2.44 | 75 2.95 | 85 3.35 | 3.6 .14 | G ¼ B (¼" BSP) M 12x1.5 | ¼" NPT |
| 10-fold üs | 10 .4 | 13 .51 | 43 1.7 | 46 1.81 | 5 .2 | 2 .08 | 13 .51 | 13 .51 | 62 2.44 | 75 2.95 | 85 3.35 | 3.6 .14 | G ¼ B (¼" BSP) M 12x1.5 | ¼" NPT |

| NCS | g | g1 | h±1 | h1±1 | s1 | SW | approx. Weight |
|------------|------------|------------|------------|------------|---------|-----------|----------------|
| 63 2½" | 57 2.24 | 57 2.24 | 54 2.13 | 54 2.13 | 5 .2 | 14 .55 | 0.18 0.40 |
| 10-fold üs | 66 2.6 | 66 2.6 | 54 2.13 | 54 2.13 | 5 .2 | 14 .55 | 0.21 0.46 |

Ordering Information with Standard Pressure Ranges, Options

| Basic Model: | | Capsule Gauge for Low Pressure, with Snap-in Window | | | | KPChE |
|--|----------------------------|---|----------|----------|------------------------------|-------------------------|
| Case filling: | without | | | | no code letters | |
| Nominal case size: | case-Ø 63 mm (2½") | | | | 63 | |
| Wetted material: | copper alloy | | | | - 1 | |
| | stainless steel | | | | - 3 | |
| Case configuration: | case / connection | screwed | | | no code letters | |
| | position of the connection | bottom centre back | | | no code letters rm | |
| | mounting device | without back flange for surface mounting | | | no code letters Rh | |
| Pressure ranges: | mbar | | | inchWC | | |
| | Vacuum | Compound ranges | Pressure | Vacuum | Compound ranges | Pressure |
| | -25 – 0 | -10 – 15 -15 – 10 | 0 – 25 | -10 – 0 | -4 – 6 -6 – 4 | 0 – 10 |
| | -40 – 0 | -15 – 25 -25 – 15 | 0 – 40 | -16 – 0 | -6 – 10 -10 – 6 | 0 – 16 |
| | -60 – 0 | -20 – 40 -40 – 20 | 0 – 60 | -25 – 0 | -10 – 15 -15 – 10 | 0 – 25 |
| | -100 – 0 | -40 – 60 -60 – 40 | 0 – 100 | -40 – 0 | -15 – 25 -25 – 15 | 0 – 40 |
| | -160 – 0 | -60 – 100 -100 – 60 | 0 – 160 | -60 – 0 | -20 – 40 -40 – 20 | 0 – 60 |
| | -250 – 0 | -100 – 150 -150 – 100 | 0 – 250 | -100 – 0 | -40 – 60 -60 – 40 | 0 – 100 |
| | -400 – 0 | -150 – 250 -250 – 150 | 0 – 400 | -160 – 0 | -60 – 100 -100 – 60 | 0 – 160 |
| | -600 – 0 | -200 – 400 -400 – 200 | 0 – 600 | -250 – 0 | -100 – 150 -150 – 100 | 0 – 250 |
| | | | | | | e.g. 0 – 60 mbar |
| Process connection: | standard thread | G ¼ B (¼" BSP) | | | G ¼ B | |
| | options: | ¼" NPT | | | ¼" NPT | |
| | | M 12x1.5 | | | M 12x1.5 | |
| | | G ⅜ B (⅜" BSP) | | | G ⅜ B | |
| | | ⅜" NPT | | | ⅜" NPT | |
| | | M 10x1 | | | M 10x1 | |
| Options: | see page 4 | | | | | |
| Example: KPChE 63 – 1, 0 – 60 mbar, G ¼ B | | | | | | |

Ordering Information Further Options

| Basic Model: Capsule Gauge for Low Pressure, with Snap-in Window | | KPCHE | | | | | | | | | | | | |
|--|--|-----------------|--|------------|-----------------------|------------|-------------------------|-----------------|--|------------|-----------------------|------------|-------------------------|---------------------------------------|
| Model code | | see page 3 | | | | | | | | | | | | |
| Options: | <p>red mark on the dial</p> <p>stationary on the dial,</p> <p>red pointer adjustable with removable ring</p> <p>special adjustment</p> <p>case polished</p> <p>silicone-free version</p> <p>restrictor screw in orifice Ø 0.3 mm (0.01")</p> <p>pressure inlet port</p> <p>material: as process connection brass or stainless steel</p> <p>overrange protection (üs) and / or vacuum protection (us)¹⁾</p> <p>for types – 1 (copper alloy)</p> <table border="0"> <tr> <td>3-fold üs or us</td> <td></td> </tr> <tr> <td>10-fold üs</td> <td>0 – 25 mbar and above</td> </tr> <tr> <td>10-fold us</td> <td>-100 – 0 mbar and above</td> </tr> </table> <p>combination 10-fold üs and 10-fold us</p> <p>only for compound ranges for spans 100 mbar (40 "WC) and above</p> <p>for types – 3 (stainless steel)</p> <table border="0"> <tr> <td>3-fold üs or us</td> <td></td> </tr> <tr> <td>10-fold üs</td> <td>0 – 25 mbar and above</td> </tr> <tr> <td>10-fold us</td> <td>-100 – 0 mbar and above</td> </tr> </table> <p>combination 10-fold üs and 3-fold us</p> <p>only for compound ranges for spans 40 mbar (16 "WC) and above</p> <p>measuring point marking</p> <p>Stainless steel plate 12 mm x 55 mm (0.47" x 2.17"), wire mounting or sticker on case coverage</p> | 3-fold üs or us | | 10-fold üs | 0 – 25 mbar and above | 10-fold us | -100 – 0 mbar and above | 3-fold üs or us | | 10-fold üs | 0 – 25 mbar and above | 10-fold us | -100 – 0 mbar and above | (order at present still in cleartext) |
| 3-fold üs or us | | | | | | | | | | | | | | |
| 10-fold üs | 0 – 25 mbar and above | | | | | | | | | | | | | |
| 10-fold us | -100 – 0 mbar and above | | | | | | | | | | | | | |
| 3-fold üs or us | | | | | | | | | | | | | | |
| 10-fold üs | 0 – 25 mbar and above | | | | | | | | | | | | | |
| 10-fold us | -100 – 0 mbar and above | | | | | | | | | | | | | |

Special Versions: Please describe your requirements in cleartext

¹⁾ max. -1000 mbar