

Oman Flour Mills Co. (S.A.O.G.), Ruwi/Muscat, Oman

Lead your
company into
a successful
future.



Oman Flour Mills Co.(S.A.O.G.), Ruwi/Port Qaboos, Oman, retrofit of existing silo facility.

The existing silo facility of Oman Flour Mills Co. (S.A.O.G.) in Ruwi/Port Qaboos in Oman was built by Buhler in the seventies and has a total storage capacity of 130,000 metric tons. The plant stores and handles 400,000 tons of material a year, predominantly wheat and other grains. In 1995 Buhler updated the electric control system and replaced the relay-based system by a PLC-based one with graphic process visualization.

Facts and figures

Hardware

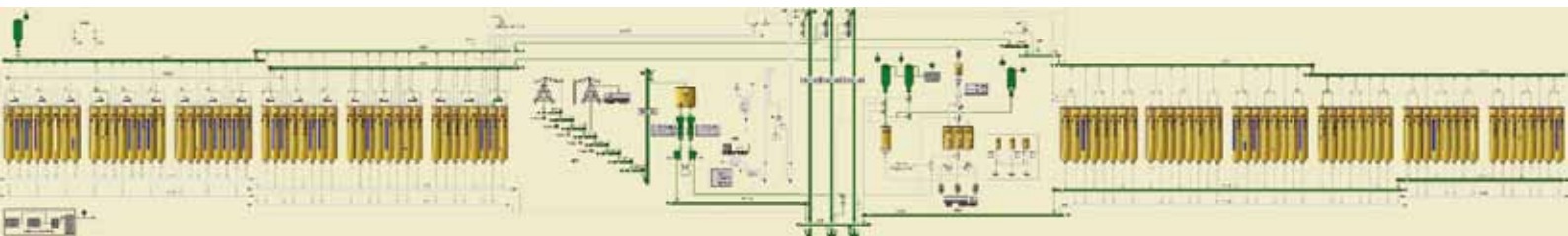
SPLC: CPU-414-3
250 motors
25 Wago nodes
> 1600 IOs

Software

WinCoS.r2
Job reports
Bin contents calculation
Job queuing lists
Totalizing statistics



WinCoS.r2 – user-friendly and easy to operate.



WinCoS.r2 – user-friendly and easy to operate.

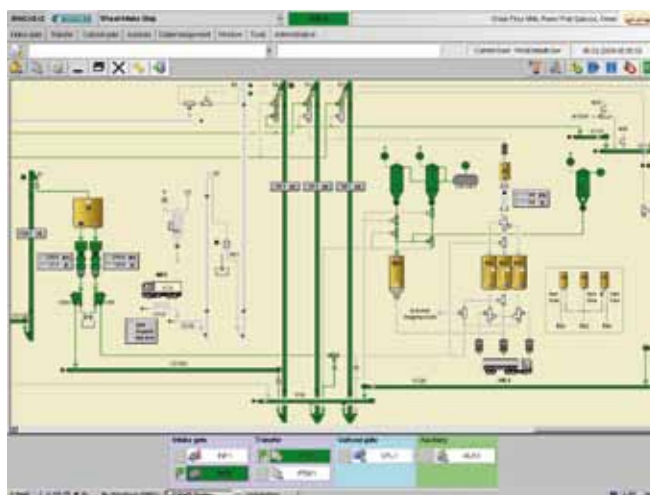
The customer is convinced of the quality as well as the top service offered by Bühler. Thus, 14 years later, Bühler was once again awarded a contract in 2009 for updating the existing plant control system. It incorporates the state-of-the-art programmable logic control (PLC) system S7-400 of Siemens and the newest-generation Bühler process automation system **WinCoS.r2**.

Efficiency increase

The bulk storage silo is controlled through six independent process lines. The heart is the ship unloading system capable of conveying 500 metric tons of grain per hour, which is accurately weighed and binned. The 96 storage bins can be accessed via 15 different process paths. Smart algorithms allow optimal path selection and the flexibility required to intervene in operations whenever the need should arise. The entire silo is controlled from two stations, which enable or disable access to the individual functions on the basis of detailed allocation of user authorizations.

Detailed and accurate data

The existing weighing system determines the actual data and transmits them to the **WinCoS.r2** process automation system, where they are processed into job reports, bin contents calculations and job statistics.



WinCoS.r2: interactive and intuitive operation.