

SPROCKETS FOR PLASTIC MODULAR BELTS

Special sprockets based on the specification of modular belt manufacturers

Product Description

- Applications**
- ✓ For driving most common plastic modular belts
 - ✓ For standard asynchronous drum motors with frequency inverter (see p 242). The frequency inverter should be set up to reduce the power by 18 %.
 - ✓ For Motors for applications with positive drive belts or no belts
 - ✓ For drum motors with cylindrical shell and key
 - ✓ For food processing applications
 - ✓ For synchronous drum motors (see p 92)
- Characteristics**
- ✓ Laser cut for excellent fitting accuracy
 - ✓ Rust-free with stainless steel sprockets

Note: The sprockets have an influence on the outer diameter of the drum motor and on the velocity. The belt pull and speed of the drum motor must be recalculated according to the increased diameter. Refer to the velocity factor (Vf) in the table below.

Fixed sprockets are available on request. Only one fixed sprocket per drum motor should be fitted to allow for belt expansion.

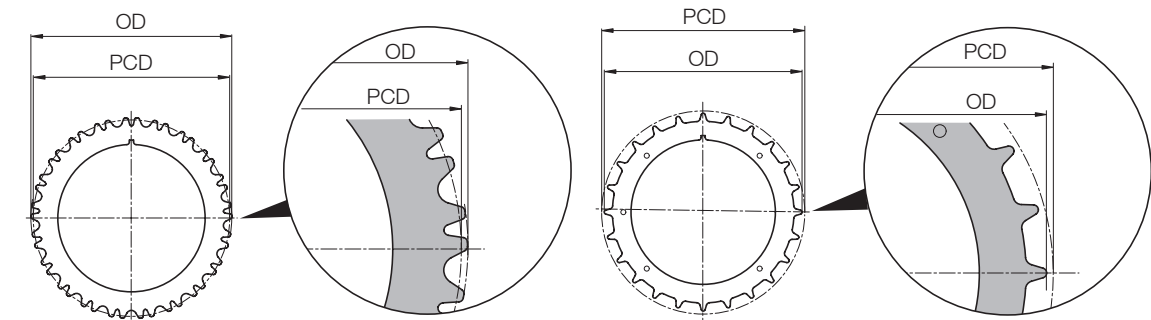
Technical Data

Material	Stainless steel, Mild steel
Temperature range	-30 to + 120 °C

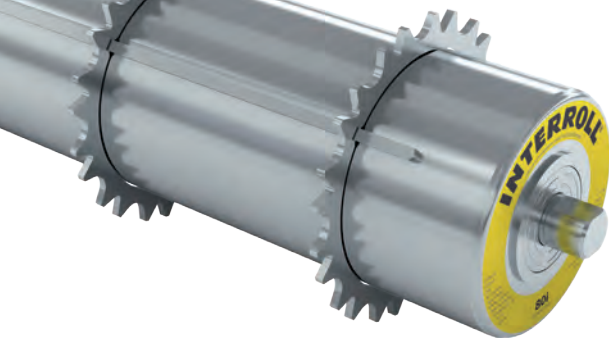
Modular belt manufacturer	Series	Rev.	Sprocket 80i / 80D						113i / 113D				138i					165i									
			Z	OD mm	PCD mm	Vf	B mm	Art. No.	Z	OD mm	PCD mm	Vf	B mm	Art. No.	Z	OD mm	PCD mm	Vf	B mm	Art. No.	Z	OD mm	PCD mm	Vf	B mm	Art. No.	
HabasitLINK	M11XX	✓	26	111.9	107.1	1.33	8	1004345	32	136.3	131.6	1.16		6	1100024												
	M12XX	✓	25	103.7	101.0	1.25	3	1001631	36	150.2	149.8	1.32		3	1001638	40	166.9	162.0	1.18	3	1100310						
	M25XX	✓	15	123.9	122.7	1.52	12	61008303	20	165.1	164.0	1.45		12	61100812												
			✓	15	123.9	122.7	1.52	12	1004342	20	165.1	164.0	1.45		4	1000302	20	165.5	164.0	1.19	6	1001648	24	198.6	196.0	1.20	6
	M50XX	✓							10	157.2	164.0	1.45		5	1100644	11	174.3	171.3	1.24	5	1100645	12	190.4	197.2	1.20	8	1100762
								10	157.0	164.0	1.45		6	1100647	11	173.8	180.0	1.30	5	1100646							

Product Range

To use sprockets, drum motors have to be ordered with cylindrical shell and with key.



- Z Number of teeth
- OD Outer diameter in mm
- PCD Pitch circle diameter in mm
- Vf Velocity factor
- B Width of sprocket in mm
- Rev. Reversible sprocket
- Art. No. Article number



SPROCKETS FOR PLASTIC MODULAR BELTS

Special sprockets based on the specification of modular belt manufacturers

Modular belt manufacturer	Series	Rev.	Sprocket 80i / 80D					113i / 113D					138i					165i											
			Z	OD mm	PCD mm	Vf	B mm	Art. No.	Z	OD mm	PCD mm	Vf	B mm	Art. No.	Z	OD mm	PCD mm	Vf	B mm	Art. No.	Z	OD mm	PCD mm	Vf	B mm	Art. No.			
Ammeraal Beltech / Uni-Chains	SNB	✓	13	107.8	106.0	1.32	3	1100677	18	146.1	146.0	1.29			3	1001610	20	162.3	162.4	1.18	3	1100242	24	194.8	195.0	1.19	3	1100668	
	Flex ONE								13	163.6	163.6	1.4			6	61010644													
	Light	✓	17	105.0	104.0	1.29	4	1100027	24	147.3	146.0	1.29			4	1100670	27	165.7	219.0	1.59	4	1100679							
	Light EP	✓	9	110.6	111.0	1.38	8	1100673	12	147.1	147.2	1.30			8	1100389	14	171.4	171.0	1.24	8	1100671	16	195.8	195.0	1.19	8	1100672	
	MPB	✓							9	142.5	149.0	1.32			8	1001644	11	174.2	180.3	1.31	8	1001656	13	205.8	212.0	1.29	8	61100180	
	M-SNB & M-QNB	✓	24	99.5	97.0	1.20	5	1001607									44	181.2	178.1	1.29	6	1100380							
	M-SNB	✓															38	156.5	156.4	1.13	5	1001627							
	OPB	✓								10	160.1	169.0	1.5			8	1100674												
	QNB	✓	15	121.50	122.0	1.52	6	1001606	17	137.5	138.0	1.2			6	1001609	21	170.1	170.0	1.23	6	1001650	24	194.4	195.0	1.19	6	1100675	
	S-MPB																20	163.8	162.4	1.18	6	1100585							
	SNB M1	✓								18	148.7	146.0	1.29			3	1100676												
	SNB M2	✓	14	119.2	114.0	1.42	3	1100681	17	144.4	138.0	1.22			3	1003093	20	165.7	162.0	1.17	3	1001622	24	199.0	195.0	1.19	3	1004089	

Order Information

Different belt variants and materials for standard belt series may affect the operational characteristics and engagement of the belt and drive profile. Although Interroll tries to show the most popular basic profile options in this catalogue, manufacturers are offering new variations of their standard belt series. If you are unable to find the required profiled lagging or sprocket you need, or if you have some doubts, please answer the following questions and send them to Interroll with your enquiry:

- Lagging or sprockets preferred?
- Drum motor diameter?
- Required belt speed?
- Belt manufacturer?
- Belt series?
- Belt type and variant?
- Belt material?
- Number of teeth?
- Reversible, yes or no?
- Outside diameter (D) in mm?
- Pitch circle diameter (PCD) in mm?
- Sprocket thickness (B) in mm?

If you didn't find your belt type or belt supplier please see updated list on www.interroll.com