

## RACCORDI GAS

- Ricavati da particolari stampati a caldo o laminati e solubilizzati.
- Accurata lavorazione delle parti filettate per eliminare l'ingrippaggio durante gli accoppiamenti.
- Eliminazione delle parti finali delle filettature con operazioni meccaniche per evitare infortuni durante la manipolazione dei pezzi.
- Finitura standard: lucidatura esterna e satinatura interna grana 120.
- Per gli altri articoli a norme Gas valgono le informazioni tecniche fornite nei relativi capitoli.

## BSP UNIONS

- Made from hot-rolled or press-forged material and solution heat-treated.
- Precise machining of the threaded parts to eliminate seizure during coupling.
- Elimination of end parts of threading with mechanical operations to prevent accidents during handling of the pieces.
- Standard finish: 120 grain external polishing and internal glazing.
- For the other BSP standards articles the technical details supplied in the respective chapters apply.

## RACCORDS GAS

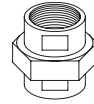
- Obtenus à partir de pièces moulées à chaud ou laminées et solubilisées.
- Usinage soigné des parties filetées pour éliminer le grippage pendant les assemblages.
- Elimination des parties finales des filetages à l'aide d'opérations mécaniques pour éviter les accidents pendant le maniement des pièces.
- Finissage standard: polissage extérieur et satinage intérieur grain 120.
- Pour les autres articles conformes aux normes Gas, voir les informations techniques fournies dans les chapitres correspondants.

## RACORES GAS

- Obtenidos a partir de piezas estampadas en caliente o laminadas y solubilizadas.
- Cuidadosa elaboración de las piezas roscadas para eliminar el agarrotamiento durante los acoplamientos.
- Eliminación de las partes terminales de las roscas con operaciones mecánicas para evitar accidentes durante la manipulación de las piezas.
- Acabado estándar: pulido exterior y satinado interior grano 120.
- Para los otros artículos fabricados según las normas Gas son válidos los datos técnicos proporcionados en los capítulos correspondientes.



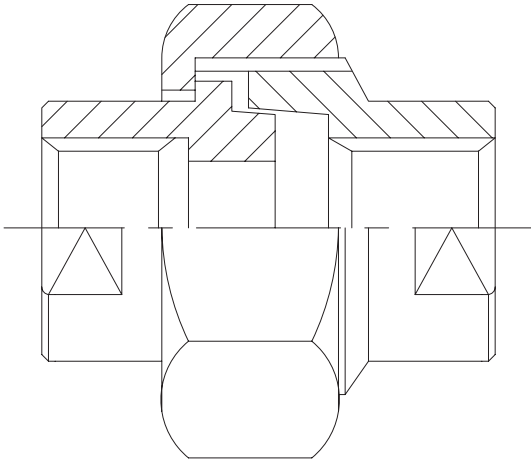
RACCORDI  
UNIONS  
RACCORDS  
RACORES

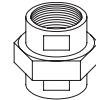


**GAS**

RACCORDO GAS  
BSP UNION

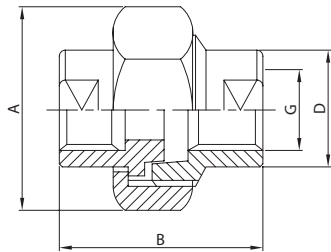
RACCORD GAS  
RACOR GAS





**RACCORDO F. FE.  
UNION T. FE.  
RACCORD F. FE.  
ENLACE JUNTA CONICA**

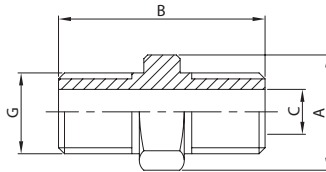
**020 G**



DN	A	B	D	G	gr
14	32,0	42,0	19,0	1/4"	115
38	36,0	45,0	23,0	3/8"	155
12	46,0	48,0	28,0	1/2"	275
34	50,0	52,0	34,0	3/4"	330
100	55,0	58,0	40,0	1"	400
114	70,0	65,0	50,0	1 1/4"	740
112	75,0	70,0	56,0	1 1/2"	870
200	90,0	78,0	70,0	2"	950

**NIPPO F. MA.  
NIPPLE T. MA.  
NIPPLE F. MA.  
MACHON R. M.**

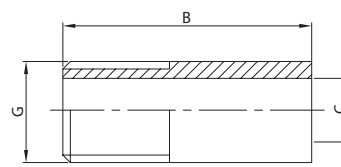
**021 G**



DN	A	B	C	G	gr
14	19,0	31,0	9,0	1/4"	25
38	22,0	34,0	11,0	3/8"	40
12	27,0	38,0	15,0	1/2"	60
34	32,0	42,0	20,0	3/4"	110
100	41,0	46,0	25,0	1"	170
114	50,0	52,0	32,0	1 1/4"	260
112	55,0	55,0	38,0	1 1/2"	300
200	70,0	60,0	50,0	2"	510
212	90,0	65,0	63,0	2 1/2"	850
300	96,0	72,0	75,0	3"	900

**TRONCHETTO F. MA.  
THREADED T. MA.  
TRONCON F. MA.  
ENTRONQUE R. M.**

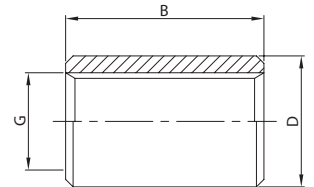
**022 G**



DN	B	C	G	gr
14	25,0	9,0	1/4"	12
38	30,0	12,5	3/8"	20
12	35,0	15,7	1/2"	32
34	40,0	21,0	3/4"	60
100	40,0	26,6	1"	85
114	45,0	35,0	1 1/4"	122
112	50,0	41,0	1 1/2"	165
200	60,0	52,5	2"	250
212	65,0	68,9	2 1/2"	295
300	70,0	78,0	3"	625

**MANICOTTO F. FE.  
SOCKET T. FE.  
MANCHON F. FE.  
MANGUITO R. H.**

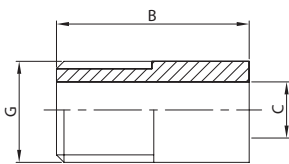
**023 G**



DN	B	D	G	gr
14	25,0	20,0	1/4"	35
38	27,0	22,0	3/8"	35
12	31,0	27,0	1/2"	60
34	35,0	34,0	3/4"	100
100	40,0	39,0	1"	135
114	45,0	49,0	1 1/4"	235
112	50,0	56,0	1 1/2"	280
200	55,0	70,0	2"	700
212	60,0	87,0	2 1/2"	950
300	65,0	99,0	3"	985

**TRONCHETTO F. MA.  
THREADED T. MA.  
TRONCON F. MA.  
ENTRONQUE R. M.**

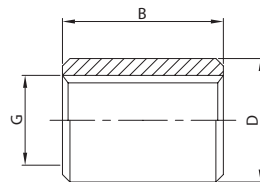
**022 GL**



DN	B	C	G	gr
14	18,0	9,0	1/4"	10
38	20,0	12,5	3/8"	20
12	25,0	15,7	1/2"	40
34	30,0	21,0	3/4"	60
100	35,0	26,6	1"	100
114	40,0	35,0	1 1/4"	140
112	40,0	41,0	1 1/2"	160
200	45,0	52,5	2"	200

**MANICOTTO F. FE.  
SOCKET T. FE.  
MANCHON F. FE.  
MANGUITO R. H.**

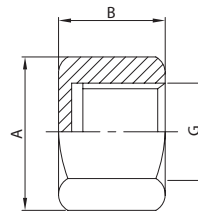
**023 GL**



DN	B	D	G	gr
14	18,0	20,0	1/4"	30
38	20,0	22,0	3/8"	40
12	25,0	27,0	1/2"	60
34	30,0	34,0	3/4"	100
100	35,0	39,0	1"	140
114	40,0	49,0	1 1/4"	230
112	40,0	56,0	1 1/2"	260
200	45,0	70,0	2"	300

**TAPPO F. FE.  
BLANK T. FE.  
BOUCHON F. FE.  
TAPÓN R. H.**

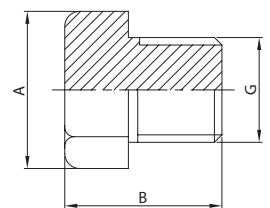
**024 G**



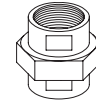
DN	A	B	G	gr
14	19,0	14,0	1/4"	20
38	22,0	16,0	3/8"	40
12	27,0	17,0	1/2"	50
34	32,0	20,0	3/4"	80
100	41,0	22,0	1"	140
114	50,0	24,0	1 1/4"	190
112	55,0	27,0	1 1/2"	260
200	70,0	30,0	2"	420

**TAPPO F. MA.  
BLANK T. MA.  
BOUCHON F. MA.  
TAPÓN R. M.**

**025 G**



DN	A	B	G	gr
14	19,0	19,0	1/4"	30
38	22,0	21,0	3/8"	40
12	27,0	24,0	1/2"	80
34	32,0	27,0	3/4"	140
100	41,0	29,0	1"	240
114	50,0	33,0	1 1/4"	420
112	55,0	35,0	1 1/2"	580
200	70,0	38,0	2"	980



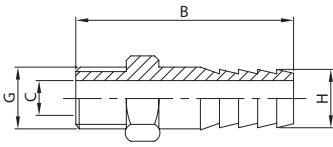
**PORTAGOMMA F. MA.  
HOSE CONNECTION T. MA.  
PORTE C. F. MA.  
ENTRONQUE MANGUERA**

**RIDUZIONE F. MA/FE.  
REDUCER T. MA./FE.  
REDUCTION F. MA./FE.  
REDUCCIÓN R. M./H.**

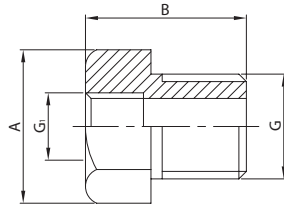
**TEE SR.  
WG. TEE  
TE SR.  
TE SR.**

**TEE F. FE.  
TEET. FE.  
TE F. FE.  
TE R. H.**

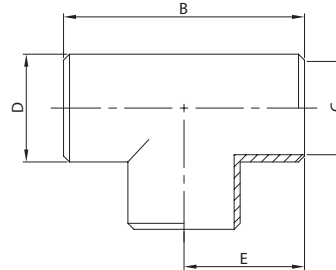
**026 G**



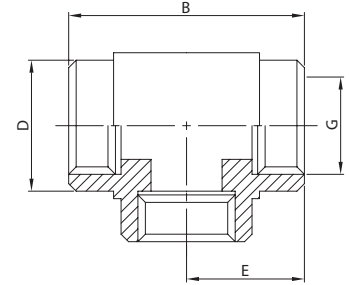
**027 G**



**028 G**



**029 G**



DN	B	C	G	H	gr
14	45,0	9,0	1/4"	13,0	115
38	51,0	11,0	3/8"	17,0	155
12	59,0	15,0	1/2"	21,0	275
34	67,0	20,0	3/4"	27,0	330
100	75,0	25,0	1"	33,0	400
114	82,0	32,0	1 1/4"	42,0	740
112	90,0	40,0	1 1/2"	48,0	870
200	103,0	50,0	2"	60,0	950

DN	A	B	G	G	gr
14	19,0	19,0	1/4"	1/8"	10
38	22,0	21,0	3/8"	1/4"	20
12	27,0	24,0	1/2"	3/8"	40
34	32,0	27,0	3/4"	1/2"	80
100	41,0	29,0	1"	3/4"	130
114	50,0	33,0	1 1/4"	1"	220
112	55,0	35,0	1 1/2"	1 1/4"	290
200	70,0	38,0	2"	1 1/2"	350

DN	B	C	D	E	gr
14	40,0	9,7	13,7	20,0	60
38	44,0	13,2	17,2	22,0	80
12	50,8	17,3	21,3	25,4	100
34	57,0	22,9	26,9	28,5	120
100	76,2	29,7	33,7	38,1	145
114	95,2	38,4	42,4	47,6	220
112	114,2	44,3	48,3	57,1	305
200	127,0	56,3	60,3	63,5	400
212	152,2	72,1	76,1	76,1	600
300	171,4	84,9	88,9	85,7	840
400	209,4	110,3	114,3	104,7	1.100

DN	B	D	E	G	gr
14	40,0	19,0	20,0	1/4"	80
38	47,0	23,0	23,5	3/8"	140
12	52,0	28,0	26,0	1/2"	200
34	64,0	34,0	32,0	3/4"	360
100	76,0	39,0	38,0	1"	520
114	88,0	48,0	44,0	1 1/4"	860
112	98,0	58,0	49,0	1 1/2"	1.260
200	114,0	68,0	57,0	2"	1.600

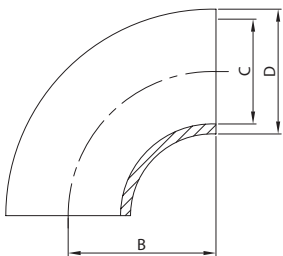
**CURVA 90° SR.  
WG. BEND 90°  
COUDE 90° SR.  
CODO 90° SR.**

**GOMITO F. FE.  
ELBOW T. FE.  
COUDE F. FE.  
CODO R. H.**

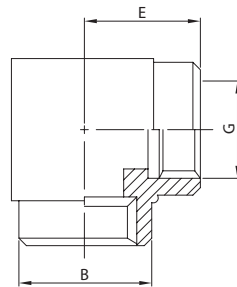
**FONDO BOMBATO  
DOME END  
FOND BOMBÉ  
CAP**

**BORDO DI APPOGGIO  
SUPPORT LIP  
COLLET  
VALONA**

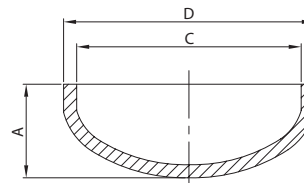
**030 G**



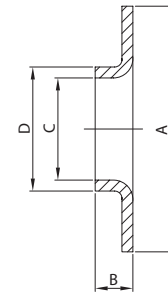
**031 G**



**018 G**



**019 G**

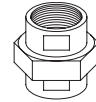
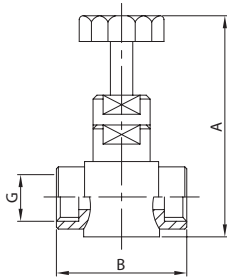


DN	B	C	D	gr
14	20,2	9,7	13,5	35
38	28,5	13,2	17,2	40
12	31,8	17,3	21,3	45
34	28,5	22,9	26,9	50
100	38,0	29,7	33,7	90
114	47,6	38,4	42,4	155
112	57,1	44,3	48,3	200
200	76,2	56,3	60,3	295
212	96,0	72,1	76,1	520
300	114,5	84,9	88,9	600
400	152,5	110,3	114,3	800

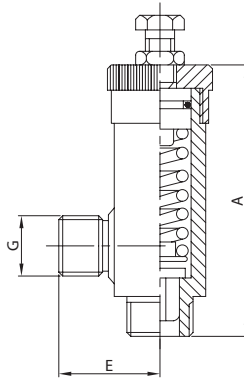
DN	B	E	G	gr
14	19,0	20,0	1/4"	80
38	23,0	23,5	3/8"	120
12	28,0	26,0	1/2"	200
34	34,0	32,0	3/4"	320
100	39,0	38,0	1"	500
114	48,0	44,0	1 1/4"	880
112	58,0	49,0	1 1/2"	1.080
200	68,0	57,0	2"	2.060

DN	A	C	D	gr
38	11,0	13,2	17,2	500
12	11,0	17,3	21,3	550
34	11,0	22,9	26,9	720
100	13,0	29,7	33,7	750
114	13,0	38,4	42,4	900
112	13,0	44,3	48,3	1000
200	20,0	56,3	60,3	1400
212	22,0	72,1	76,1	1700
300	25,0	84,9	88,9	2800

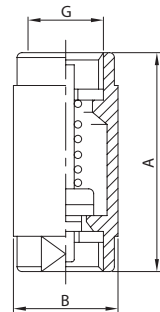
DN	A	B	C	D	gr
12	45,0	6,0	17,3	21,3	40
34	58,0	6,0	22,9	26,9	60
100	68,0	8,0	29,7	33,7	80
114	78,0	10,0	38,4	42,4	110
112	88,0	10,0	44,3	48,3	150
200	102,0	12,0	56,3	60,3	190
212	122,0	12,0	72,1	76,1	260
300	139,0	12,0	84,9	88,9	340


**RUBINETTO A SPILLO  
 PIN COCK  
 ROBINET À AIGULLE  
 GRIFO DE AGUJA**
**044 G**


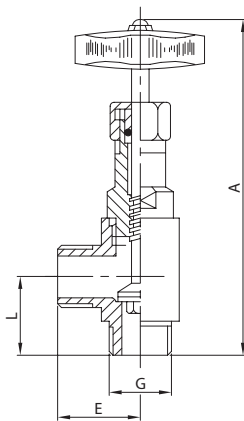
DN	A	B	G	gr
14	84,0	45,0	1/4"	500
38	105,0	52,0	3/8"	530
12	121,0	61,0	1/2"	570
34	132,0	68,0	3/4"	600
100	150,0	86,0	1"	630

**V. SICUREZZA MA.  
 MA. RELIEF VALVE  
 SOUPE DE DÉCHARGE MA.  
 V. SEGURIDAD M.**
**036 G**


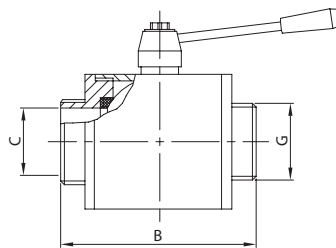
DN	A	E	G	gr
14	105,0	34,0	1/4"	450
38	115,0	43,0	3/8"	470
12	133,0	52,0	1/2"	500
34	145,0	63,0	3/4"	530
100	165,0	70,0	1"	600

**V. RITEGNO FE.  
 FE. CHECK VALVE  
 C. RETENUE FE.  
 V. RETENCIÓN H.**
**034 G**


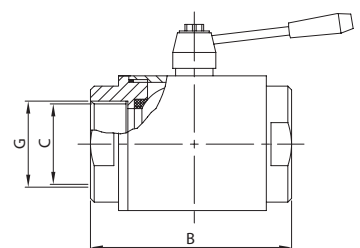
DN	A	B	G	gr
14	60,0	22,0	1/4"	100
38	65,0	25,0	3/8"	140
12	75,0	30,0	1/2"	220
34	80,0	38,0	3/4"	280
100	85,0	48,0	1"	600
114	90,0	60,0	1 1/4"	800
112	95,0	65,0	1 1/2"	1.240
200	105,0	75,0	2"	1.530

**VALVOLA SQUADRA  
 SQUARE VALVE  
 VANNE EQUERRE  
 VÁLVULA ESCUADRA**
**035 G**


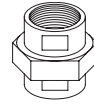
DN	A	E	G	L	gr
14	96,0	23,0	1/4"	23,0	200
38	154,0	27,5	3/8"	27,5	350
12	178,0	35,0	1/2"	35,0	650
34	195,0	40,5	3/4"	40,5	950
100	225,0	48,0	1"	48,0	1.300

**VALVOLA SFERA F. MA.  
 BALL VALVE T. MA.  
 VANNE BOULE F. MA.  
 VÁLVULA BOLA R. M.**
**040 G**


DN	B	C	G	gr
38	75,0	15,0	3/8"	320
12	75,0	15,0	1/2"	380
34	85,0	20,0	3/4"	550
100	89,0	25,0	1"	720
114	106,0	32,0	1 1/4"	1.180
112	128,0	40,0	1 1/2"	2.190
200	136,0	50,0	2"	2.900
212	164,0	65,0	2 1/2"	6.000
300	160,0	78,0	3"	8.000
400	192,0	98,0	4"	15.500

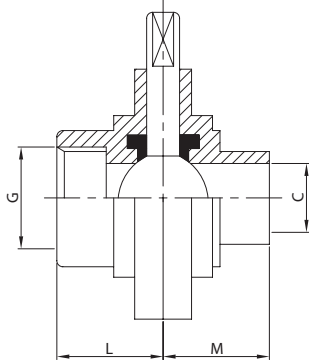
**VALVOLA SFERA F. FE.  
 BALL VALVE T. FE.  
 VANNE BOULE F. FE.  
 VÁLVULA BOLA R. H.**
**041 G**


DN	B	C	G	gr
38	63,0	15,0	3/8"	380
12	63,0	15,0	1/2"	380
34	69,0	20,0	3/4"	530
100	73,0	25,0	1"	680
114	95,0	32,0	1 1/4"	1.150
112	98,0	40,0	1 1/2"	2.120
200	116,0	50,0	2"	2.950
212	143,0	65,0	2 1/2"	6.500
300	160,0	78,0	3"	9.000
400	190,0	98,0	4"	16.000



V. FARFALLA F. FE./EL.  
 BUTTERFLY V. T. FE./PE.  
 V. PAPILLON F. FE./BL.  
 V. MARIPOSA R. H./EL.

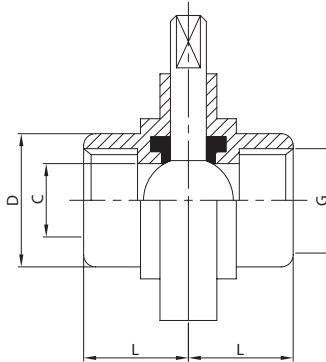
**781 G**



DN	C	G	L	M	gr
34	20,0	3/4"	34,0	34,0	1.650
100	25,5	1"	34,0	34,0	1.900
114	34,0	1 1/4"	38,0	38,0	1.970
112	39,0	1 1/2"	38,0	38,0	2.440
200	50,0	2"	40,0	40,0	2.900
212	66,0	2 1/2"	40,0	41,0	3.280
300	77,5	3"	41,0	41,0	5.500
400	101,0	4"	44,0	44,0	5.740

V. FARFALLA F. FE./FE.  
 BUTTERFLY V. T. FE./FE.  
 V. PAPILLON F. FE./FE.  
 V. MARIPOSA R. H./H.

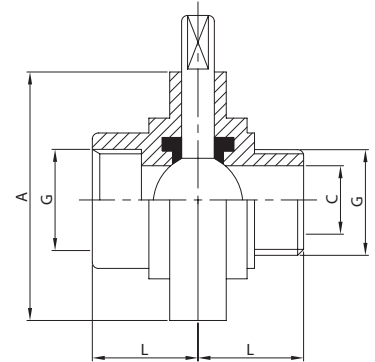
**788 G**



DN	C	D	G	L	gr
34	20,0	37,0	3/4"	34,0	1.810
100	25,5	40,0	1"	34,0	2.090
114	34,0	50,0	1 1/4"	38,0	2.170
112	39,0	58,0	1 1/2"	38,0	2.680
200	50,0	70,0	2"	40,0	3.190
212	66,0	86,0	2 1/2"	40,0	3.610
300	77,5	100,0	3"	41,0	6.050
400	101,0	124,0	4"	44,0	6.310

V. FARFALLA F. FE./MA.  
 BUTTERFLY V. T. FE./MA.  
 V. PAPILLON F. FE./MA.  
 V. MARIPOSA R. H./M.

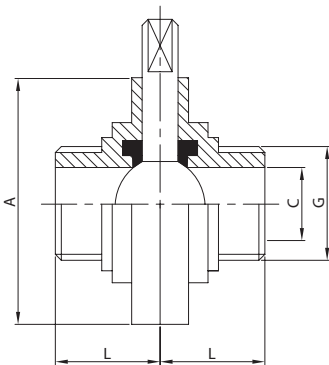
**789 G**



DN	A	C	G	L	gr
34	79,0	20,0	3/4"	34,0	1.700
100	79,0	25,5	1"	34,0	1.950
114	85,0	34,0	1 1/4"	38,0	2.050
112	92,0	39,0	1 1/2"	38,0	2.520
200	105,0	50,0	2"	40,0	3.000
212	125,0	66,0	2 1/2"	40,0	3.380
300	137,0	77,5	3"	41,0	5.600
400	157,0	101,0	4"	44,0	5.850

V. FARFALLA F. MA./MA.  
 BUTTERFLY V. T. MA./MA.  
 V. PAPILLON F. MA./MA.  
 V. MARIPOSA R. M./M.

**799 G**



DN	A	C	G	L	gr
34	79,0	20,0	3/4"	34,0	1.750
100	79,0	25,5	1"	34,0	2.040
114	85,0	34,0	1 1/4"	38,0	2.110
112	92,0	39,0	1 1/2"	38,0	2.600
200	105,0	50,0	2"	40,0	3.110
212	125,0	66,0	2 1/2"	40,0	3.500
300	137,0	77,5	3"	41,0	5.940
400	157,0	101,0	4"	44,0	6.200