



RACCORDI ENO

- Ricavati da particolari stampati a freddo e lavorati meccanicamente alle estremità.
- Finitura standard: lucidatura esterna e satinatura interna grana 120.
- Per le valvole a farfalla a norme Eno valgono le informazioni tecniche fornite nel relativo capitolo.

ENO UNIONS

- Made from cold-pressed components mechanically worked at the ends.
- Standard finish: 120 grain external polishing and internal glazing.
- For the Eno butterfly valves the technical details supplied in the respective chapter apply.

RACCORDS ENO

- Obtenus à partir de pièces imprimées à froid et travaillées mécaniquement aux embouts.
- Finissage standard: polissage extérieur et satinage intérieur grain 120.
- Pour les vannes papillon conformes aux normes Eno, voir les informations techniques fournies dans le chapitre correspondant.

RACORES ENO

- Obtenidos a partir de piezas estampadas en frío y con acabado mecanizado en su extremidad.
- Acabado estándar: pulido exterior y satinado interior grano 120.
- Para las válvulas de mariposa fabricadas según las normas Eno son válidos los datos técnicos proporcionados en el capítulo correspondiente.



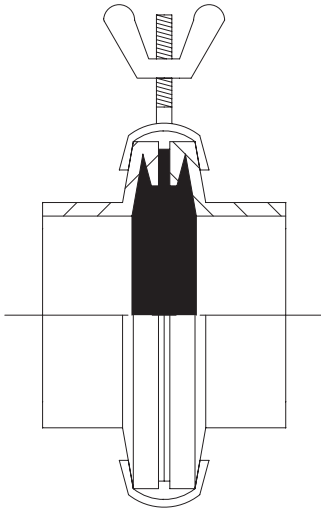
RACCORDI
UNIONS
RACCORDS
RACORES



ENO

RACCORDO ENO
ENO UNION

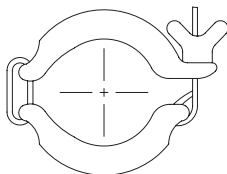
RACCORD ENO
RACOR ENO





MORSETTO ENO
ENO CLAMP
COLLIER ENO
ABRAZADERA ENO

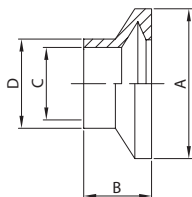
121 E



DN	gr
40	200
50	250
60	300
70	350
80	400
100	450

BOCCHETTONE ENO
ENO PART
FERRULE ENO
ENLACE ENO

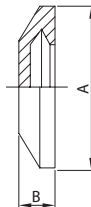
102 E



DN	A	B	C	D	gr
40	65,0	25,0	37,0	40,0	130
50	75,0	30,0	49,0	52,0	160
60	86,0	32,0	57,0	60,0	210
70	98,0	38,0	66,0	70,0	260
80	109,0	38,0	81,0	85,0	300
100	128,0	38,0	97,4	101,6	350

TAPPO ENO
ENO BLANK
BOUCHON ENO
TAPÓN ENO

104 E



DN	A	B	gr
40	65,0	15,0	100
50	75,0	17,0	150
60	86,0	17,0	250
70	98,0	17,0	300
80	109,0	17,0	325
100	128,0	17,0	350

GUARNIZIONE PER BOCC.
SEAL RING FOR PART
JOINT POUR FERRULE
JUNTA ENLACE

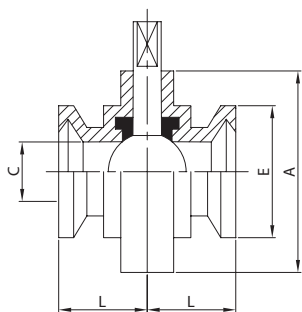
131 E



DN	B	C
40	13,0	40,0
50	13,0	50,0
60	13,0	60,0
70	14,0	70,0
80	14,0	80,0
100	14,0	100,0

V. FARFALLA ENO/ENO
BUTTERFLY V. ENO/ENO
V. PAPILLON ENO/ENO
V. MARIPOSA ENO/ENO

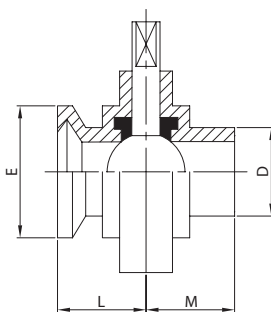
722 E



DN	A	C	E	L	gr
40	92,0	37,0	65,0	38,0	1.450
50	105,0	49,0	75,0	40,0	1.870
60	112,0	57,0	86,0	40,0	2.300
70	125,0	66,0	98,0	40,0	2.755
80	137,0	81,0	108,0	41,0	3.200
100	157,0	97,4	129,0	44,0	3.940

V. FARFALLA ENO/EL.
BUTTERFLY V. ENO/PE.
V. PAPILLON ENO/BL.
V. MARIPOSA ENO/EL.

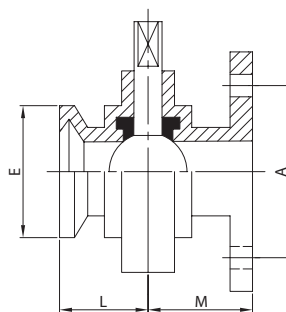
721 E



DN	D	E	L	M	gr
40	40,0	65,0	38,0	38,0	1.220
50	52,0	75,0	40,0	40,0	1.570
60	60,0	86,0	40,0	40,0	1.880
70	70,0	98,0	40,0	41,0	2.255
80	85,0	108,0	41,0	42,0	2.750
100	101,6	129,0	44,0	44,0	3.390

V. FARFALLA ENO/FL.
BUTTERFLY V. ENO/FL.
V. PAPILLON ENO/BR.
V. MARIPOSA ENO/BR.

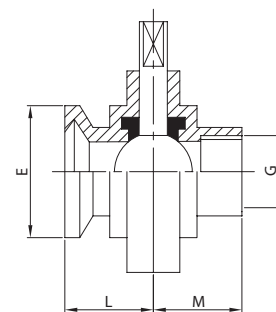
725 E



DN	A	E	L	M	gr
40	90,0	65,0	38,0	47,5	2.470
50	110,0	75,0	40,0	49,5	2.920
60	130,0	86,0	40,0	49,5	3.480
70	130,0	98,0	40,0	50,5	3.980
80	150,0	108,0	41,0	51,5	5.400
100	170,0	129,0	44,0	53,5	6.390

V. FARFALLA ENO/F. FE.
BUTTERFLY V. ENO/T. FE.
V. PAPILLON ENO/F. FE.
V. MARIPOSA ENO/R. H.

782 E



DN	E	G	L	M	gr
40	65,0	1 1/4"	38,0	38,0	1.450
50	75,0	1 1/2"	40,0	38,0	1.870
60	86,0	2"	40,0	40,0	2.300
70	98,0	2 1/2"	40,0	40,0	2.755
80	108,0	3"	41,0	41,0	3.200
100	129,0	4"	44,0	44,0	3.940

