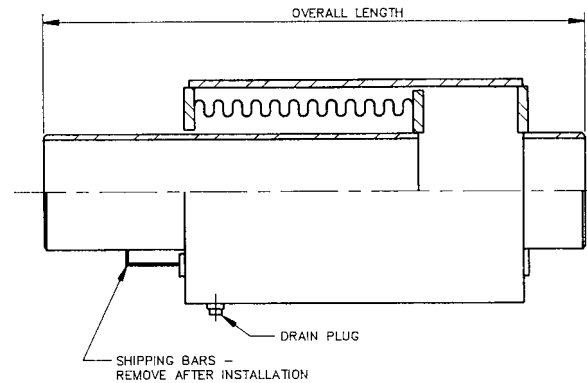
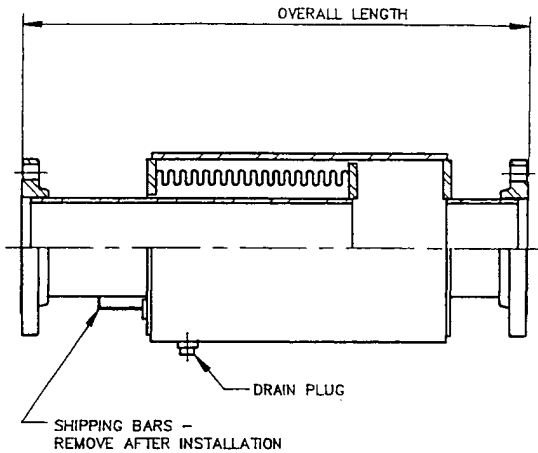


UNISOURCE
STYLE EP
Single, Externally
Pressurized
Expansion Joint
150 PSIG, 6" Travel



Quant	Size (In.)	Overall Lgth Flanged (In.)	Overall Lgth Weld Ends (In.)	Effective Area (In. ²)	Rated Compression (In.)	Rated Extension (In.)	Part #	Axial Spring Rate (Lbs./In.)	Max. Oper Pressure @ 650°F. (PSIG)	Weight Flanged (Lbs.)	Weight Weld Ends (Lbs.)
	1-1/2	30-3/4	28-3/4	6	6.0	1.12	S15150EP-6.0-XX-XX-OAL	57	150	35	29
	2	34-1/2	32	12	6.0	1.12	S2150EP-6.0-XX-XX-OAL	130	150	56	46
	2-1/2	34-1/2	32	12	6.0	1.12	S25150EP-6.0-XX-XX-OAL	130	150	65	50
	3	31	28-1/2	16	6.0	1.12	S3150EP-6.0-XX-XX-OAL	190	150	74	57
	4	32-1/2	29-1/2	30	6.0	1.12	S4150EP-6.0-XX-XX-OAL	283	150	117	89
	5	30	27-1/2	42	6.0	1.12	S5150EP-6.0-XX-XX-OAL	334	150	149	116
	6	30-1/4	27-1/2	53	6.0	1.12	S6150EP-6.0-XX-XX-OAL	380	150	167	125
	8	32	29	83	6.0	1.12	S8150EP-6.0-XX-XX-OAL	808	150	265	198
	10	34	30-3/4	135	6.0	1.50	S10150EP-6.0-XX-XX-OAL	710	150	358	261
	12	35-3/4	32	182	6.0	1.50	S12150EP-6.0-XX-XX-OAL	811	150	467	324
	14	36	32	212	6.0	1.50	S14150EP-6.0-XX-XX-OAL	885	150	565	367

XX-XX: 48-48 = 150# C/S RFSO Flanges
 42-42 = Sch 40 C/S Beveled Weld Ends

Note: (1) Sizes larger than 14" available upon request. (2) If installed vertically, position with traveling end up to avoid trapping media.

Customer: _____
 Project: _____
 Engineer: _____
 PO#: _____

Materials
Bellows: Single or multiply 304 S/S.
Ends:
 Flanges: 150# ANSI B 16.5 RFSO C/S
 Weld Ends: Sch 40 C/S
Pipe/Shell: C/S Sch Standard
Drain Port: C/S w/taped plug
Anchor Base: None
Lifting Lugs: Used on all units



Portland, OR

DRAWING EPS-6.0-150 9/25/02

M