

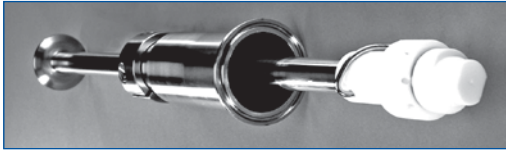
## Lances

### Custom fabricated for your application

#### Fabricated Lances

Whereas a header or spray bar is a pipe containing multiple nozzles, a lance is a pipe in which one nozzle is attached to the end of it (see photos). The lance can then be inserted into the target area. This could be a tank, a larger pipe, or a gas or fluid system. The purpose of the lance is to spray at a specific target (such as to clean a tank) or inject fluid into the system (such as gas conditioning). Lechler can fabricate a nozzle lance to perform any spray requirement you may have. Here are some examples:

#### Sanitary retractable lance



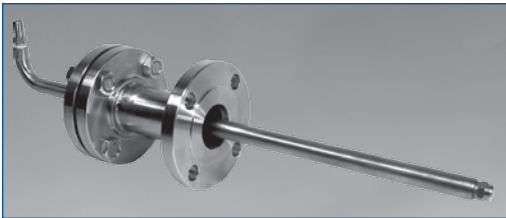
#### Applications

- Tank cleaning

#### Features

- Manually inserts and retracts into tank for a non-CIP sanitary application
- Accepts a variety of nozzle types
- Polished finish for sanitary applications

#### Industrial retractable lance



#### Applications

- Fluid injection

#### Features

- Manually inserts; retracts into vessel or pipe
- Flexibility; accepts a variety of nozzles, adjusts to various size flanges; has variable insertion lengths

#### Standard flanged lance



#### Applications

- Tank cleaning
- Fluid injection

#### Features

- Inserts into tank for CIP applications
- Accepts a variety of nozzle types

#### Standard flanged Sanitary Lance



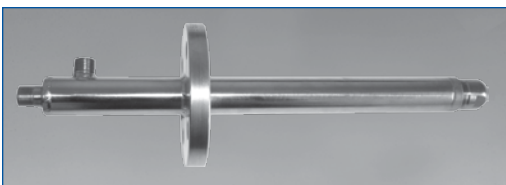
#### Applications

- Tank cleaning
- Fluid injection

#### Features

- Inserts into tank for CIP applications
- Accepts a variety of nozzle types
- Materials and connections suitable for sanitary applications

#### Pneumatic Twin Fluid lance



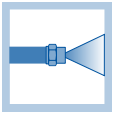
#### Applications

- Gas treatment
- Spray drying
- Fluidized bed granulation
- Atomizing of liquids to small droplets
- Combustion of liquids

#### Features

- Two styles: solid jet atomization and pre-atomization
- Solid jet atomization (for higher viscosity fluids)
  - Single atomization of solid fluid jet
  - Maximum free passage (less clogging risk)
  - Suitable for medium to high viscosity fluids
- Pre-atomization (for highest atomization efficiency)
  - Atomization of previously atomized cone spray
  - Finest droplets possible due to double atomization

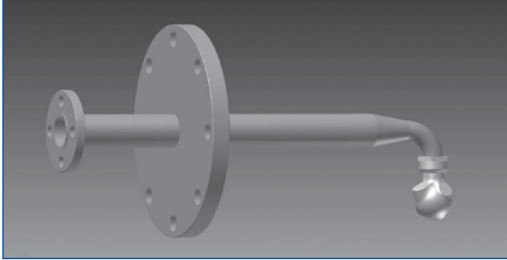
CIP=Clean-in-Place



## Lances

Custom fabricated for your application

### ANSI flanged lance



#### Applications

- Tank cleaning
- CIP applications

#### Features

- Accepts a variety of sizes
- Flanged connection for more permanent installation of nozzle and lance
- 90° elbow allows for side entry

### Tri-clamp connection lance



#### Applications

- Tank cleaning
- Fluid injection

#### Features

- Accepts a variety of nozzles
- Quick disconnect for easier use in non-CIP applications

### Branched flanged lance



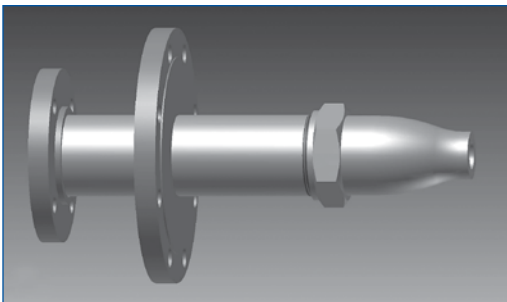
#### Applications

- Tank cleaning
- Chemical processing

#### Features

- Accepts a variety of nozzles
- Dual arms allow spraying in multiple directions

### CenterJet full cone lance



#### Applications

- Surface spraying
- Quench cooling
- Fire suppression
- Chemical processing
- CIP applications

#### Features

- Accepts a variety of nozzle types
- Available in various materials for maximum chemical resistance