

FORMOST

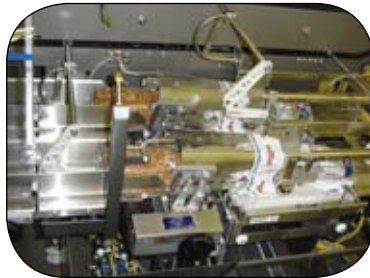
FUJI

THE FORMOST DUAL LANE BAGGER

Quality is "First and Formost"



GTS-4



TWO LANES - TWO PACKAGES

DUAL OR SINGLE LANE CAPABILITY

SERVO OVERHEAD OPTION

GENTLE PRODUCT HANDLING

UP TO 50 CYCLES PER MINUTE

UP TO 100 BAGS PER MINUTE

TWO LANES FOR INCREASED PRODUCTIVITY

The new Formost GTS-4 Dual Lane Bagger increases packaging line productivity where limited space is available.

Individual or unitized products are fed to the dual lanes from a single infeed. The system incorporates the same principals of positive product flow and gentle handling that exists on our standard GTS baggers. After the bagging operation, the two lanes place the packages on a single discharge conveyor.

During bag table changes, product feeding is suspended to the lane being resupplied only.

FORMOST FUJI CORPORATION

19211 144th Avenue NE • Woodinville, WA 98072

Phone: 425-483-9090 • Fax: 425-486-5656 • email: salesoffice@formostfuji.com

www.formostfuji.com

Standard Features

Dual Product Lanes

Inboard and outboard lanes operate simultaneously. The inboard lane may be operated independently.

Smooth Product Transfer

Product is conveyed from the infeed into the bagger where the overhead paddles gently push the product into the awaiting bags.

Innovative Bag Opening

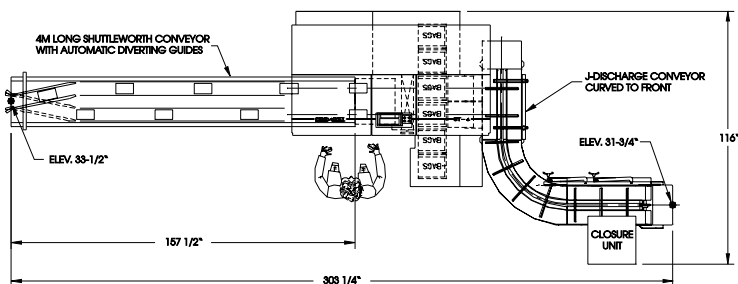
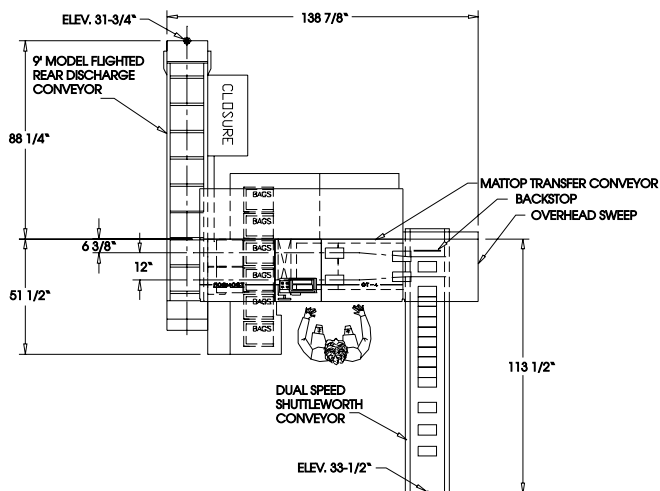
Combination of vertical and horizontal motion for positive bag control.

Automatic Bag Feed System

4-tray loose table system. During a bag table change, product feeding is suspended to the affected lane.

Touch screen controls

Easy operator interface.



The Formost Dual Lane Bagger is available in left and right hand configurations.
Contact Us for system specifications.

FORMOST FUJI CORPORATION

19211 144th Avenue NE • Woodinville, WA 98072

Phone: 425-483-9090 • Fax: 425-486-5656 • email: salesoffice@formostfuji.com

www.formostfuji.com