

CUTTING RING FITTINGS INDEX




DIN L / DIN S Series

	page
Cutting ring	03.13.005
Nut	03.13.005
Equal straight couplings	03.13.010
Equal elbow	03.13.010
Equal tee	03.13.015
Equal cross	03.13.015
Taper male stud couplings	03.13.020
Cylindric male stud couplings	03.13.025
Metric and cylindric male stud couplings	03.13.030
Male stud couplings NPT	03.13.030
Taper male stud elbow	03.13.035
Metrical taper male stud elbow	03.13.035
Male stud elbow NPT	03.13.040
Male stud branch tees	03.13.045
NPT male stud branch tees	03.13.045
Taper male tee	03.13.050
Male tee NPT	03.13.050
Bulkhead straight couplings	03.13.055
Bulkhead elbow	03.13.055
Stud couplings to solder	03.13.060
Cylindric female stud couplings	03.13.060
Metric female stud couplings	03.13.065
Gauge female stud couplings	03.13.065
Straight reducing couplings	03.13.070
Swivelling elbow	03.13.075
Swivelling tee	03.13.080
Swivelling tee	03.13.080
Swivelling cylindric male couplings	03.13.085
Swivelling NPT male coupling	03.13.085


GAZ Serie

	page
Cutting ring	03.08.005
Nut	03.08.005
Straight coupling	03.08.005
Equal elbow	03.08.005
Equal tee	03.08.005
Bulkhead straight coupling	03.08.005
Cylindric male stud coupling	03.08.010
Taper male stud coupling	03.08.010
NPT male stud coupling	03.08.010
Taper male elbow	03.08.015
NPT male elbow	03.08.015
Cylindric female stud coupling	03.08.015

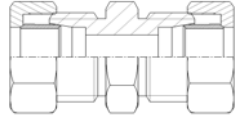
Cutting Ring

Tube diameter (mm)	Reference	
13	367000013	
17	367000017	
21	367000021	
27	367000027	
33	367000033	

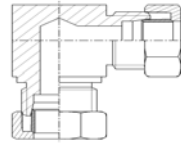
Nut

Tube diameter (mm)	Reference	
13	367030013	
17	367030017	
21	367030021	
27	367030027	
33	367030033	

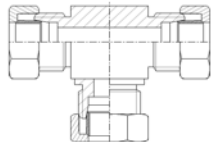
Straight Stud Coupling

Tube diameter (mm)	Reference	
13	367040013	
17	367040017	
21	367040021	
27	367040027	
33	367040033	

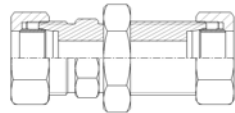
Equal Elbow

Tube diameter (mm)	Reference	
13	367130013	
17	367130017	
21	367130021	
27	367130027	
33	367130033	

Equal Tee

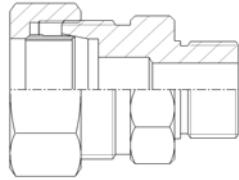
Tube diameter (mm)	Reference	
13	367140013	
17	367140017	
21	367140021	
27	367140027	
33	367140033	

Bulkhead Straight Coupling

Tube diameter (mm)	Reference	
13	367150013	
17	367150017	
21	367150021	
27	367150027	
33	367150033	

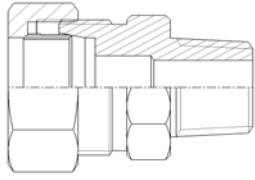
Cylindric male stud coupling

Tube diameter (mm)	BSPP Thread	Reference
13	1/4"	367061314
	3/8"	367061338
17	3/8"	367061738
	1/2"	367061742
21	1/2"	367062142
	3/4"	367062144
27	3/4"	367062744
33	1"	367063310



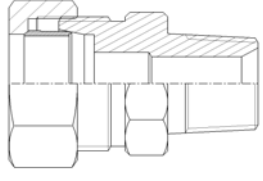
Taper Male Stud Coupling

Tube diameter (mm)	BSPT Thread	Reference
13	1/4"	367051314
	3/8"	367051338
17	3/8"	367051738
	1/2"	367051742
21	1/2"	367052142
	3/4"	367052144
27	3/4"	367052744
33	1"	367053310



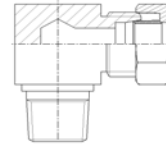
NPT Male Stud Coupling

Tube diameter (mm)	NPT Thread	Reference
13	1/4"	367071314
	3/8"	367071338
17	3/8"	367071738
	1/2"	367071742
21	1/2"	367072142
	3/4"	367072144
27	3/4"	367072744
33	1"	367073310

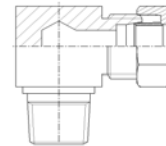


**Marquage unitaire des pièces :
traçabilité totale**

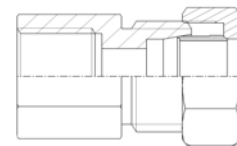
Taper Male Gas Elbow		
Tube diameter (mm)	BSPT Thread	Reference
13	1/4"	367101314
	3/8"	367101338
17	3/8"	367101738
	1/2"	367101742
21	1/2"	367102142
	3/4"	367102144
27	3/4"	367102744
33	1"	367103310




NPT Male Elbow		
Tube diameter (mm)	NPT Thread	Reference
13	1/4"	367121314
	3/8"	367121338
17	3/8"	367121738
21	1/2"	367122142
	3/4"	367122144
27	3/4"	367122744
33	1"	367123310



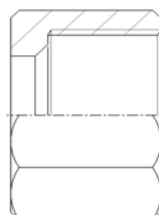
Cylindric Female Stud Coupling		
Tube diameter (mm)	BSPP Thread	Reference
13	1/4"	367081314
	3/8"	367081338
17	3/8"	367081738
	1/2"	367081742
21	1/2"	367082142
	3/4"	367082144
27	3/4"	367082744
33	1"	367083310



Cutting ring		
Tube diameter (mm)	Reference	
L	6	36000006
	8	36000008
	10	36000010
	12	36000012
	15	36000015
	18	36000018
	22	36000022
	28	36000028
	35	36000035
	42	36000042
S	6	36200006
	8	36200008
	10	36200010
	12	36200012
	14	36200014
	16	36200016
	20	36200020
	25	36200025
	30	36200030
	38	36200038




Nut		
Tube diameter (mm)	Reference	
L	6	360030006
	8	360030008
	10	360030010
	12	360030012
	15	360030015
	18	360030018
	22	360030022
	28	360030028
	35	360030035
	42	360030042
S	6	362030006
	8	362030008
	10	362030010
	12	362030012
	14	362030014
	16	362030016
	20	362030020
	25	362030025
	30	362030030
	38	362030038



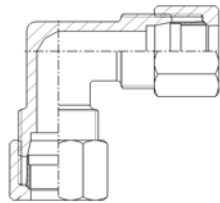
Equal Straight Coupling

Tube diameter (mm)		Reference
L	6	360040006
	8	360040008
	10	360040010
	12	360040012
	15	360040015
	18	360040018
	22	360040022
	28	360040028
	35	360040035
	42	360040042
S	6	362040006
	8	362040008
	10	362040010
	12	362040012
	14	362040014
	16	362040016
	20	362040020
	25	362040025
	30	362040030
	38	362040038

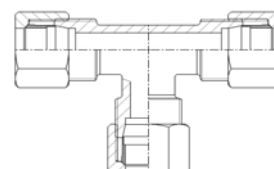


Equal Elbow

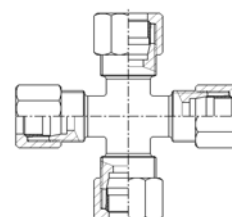
Tube diameter (mm)		Reference
L	6	360130006
	8	360130008
	10	360130010
	12	360130012
	15	360130015
	18	360130018
	22	360130022
	28	360130028
	35	360130035
	42	360130042
S	6	362130006
	8	362130008
	10	362130010
	12	362130012
	14	362130014
	16	362130016
	20	362130020
	25	362130025
	30	362130030
	38	362130038



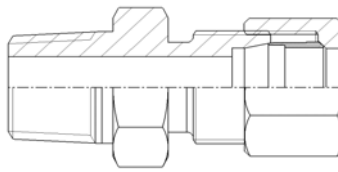
Equal Tee		
Tube diameter (mm)	Reference	
L	6	360140006
	8	360140008
	10	360140010
	12	360140012
	15	360140015
	18	360140018
	22	360140022
	28	360140028
	35	360140035
S	42	360140042
	6	362140006
	8	362140008
	10	362140010
	12	362140012
	14	362140014
	16	362140016
	20	362140020
	25	362140025
	30	362140030
38	362140038	



Equal Cross		
Tube diameter (mm)	Reference	
L	6	360190006
	8	360190008
	10	360190010
	12	360190012
	15	360190015
	18	360190018
	22	360190022
	28	360190028
	35	360190035
S	42	360190042
	6	362190006
	8	362190008
	10	362190010
	12	362190012
	14	362190014
	16	362190016
	20	362190020
	25	362190025
	30	362190030
38	362190038	



Taper Male Stud coupling



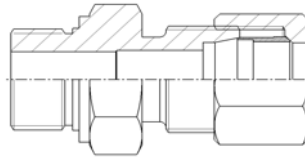
Tube diameter (mm)		BSPB Thread	Reference
L	6	1/8"	360050608
		1/4"	360050614
	8	1/8"	360050808
		1/4"	360050814
		3/8"	360050838
	10	1/4"	360051014
		3/8"	360051038
		1/2"	360051042
	12	1/4"	360051214
		3/8"	360051238
		1/2"	360051242
	15	1/2"	360051542
	18	1/2"	360051842
		3/4"	360051844
	22	3/4"	360052244
	28	1"	3600528100
35	1"1/4	3600535114	
42	1"1/2	3600542142	

DIN L / DIN S Series



[Index](#)

Cylindric Male Stud Coupling



Tube diameter (mm)		BSPP Thread	Reference
L	6	1/8"	360060608
		1/4"	360060614
	8	1/8"	360060808
		1/4"	360060814
		3/8"	360060838
	10	1/4"	360061014
		3/8"	360061038
		1/2"	360061042
	12	1/4"	360061214
		3/8"	360061238
		1/2"	360061242
	15	1/2"	360061542
	18	1/2"	360061842
3/4"		360061844	
22	3/4"	360062244	
28	1"	3600628100	
35	1"1/4	3600635114	
42	1"1/2	3600642142	
S	6	1/8"	362060608
		1/4"	362060614
	8	1/4"	362060814
		3/8"	362060838
	10	1/4"	362061014
		3/8"	362061038
		1/2"	362061042
	12	1/4"	362061214
		3/8"	362061238
		1/2"	360061242
	14	1/2"	362061442
	16	1/2"	362061642
		3/4"	362061644
20	3/4"	362062044	
25	1"1/4	3620625114	
30	1"1/2	3620630142	

DIN L / DIN S Series



[Index](#)

Metric and Cylindric Male Stud Coupling				
Tube diameter (mm)	Metric Thread	Reference		
L	6	10 X 1		360440610
	8	12 X 1,5		360440812
	10	14 X 1,5		360441014
	12	16 X 1,5		360441216
	15	18 X 1,5		360441518
	18	22 X 1,5		360441822
	22	26 X 1,5		360442226
	28	33 X 2		360442833
	35	42 X 2		360443542
42	48 X 2	360444248		
S	6	12 X 1,5		362440612
	8	14 X 1,5		362440814
	10	16 X 1,5		362441016
	12	18 X 1,5		362441218
	14	20 X 1,5		362441420
	16	22 X 1,5		362441622
	20	27 X 2		362442027
	25	33 X 2		362442533

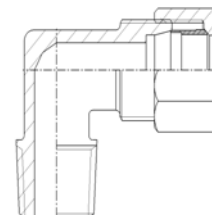
NPT Male Stud Coupling				
Tube diameter (mm)	Metric Thread	Reference		
L	6	1/8"		360070608
	8	1/8"		360070808
		1/4"		360070814
	10	1/4"		360071014
	12	3/8"		360071238
	15	1/2"		360071542
	18	1/2"		360071842
	22	3/4"		360072244
	28	1"		3600728100
	35	1"1/4		3600735114
42	1"1/2	3600742142		
S	6	1/4"		362070614
	8	1/4"		362070814
	10	3/8"		362071038
	12	3/8"		362071238
	14	1/2"		362071442
	16	1/2"		362071642
	20	3/4"		362072044
	25	1"	3620725100	
	30	1"1/4	3620730114	

DIN L / DIN S Series

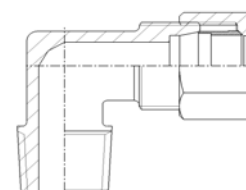


[Index](#)

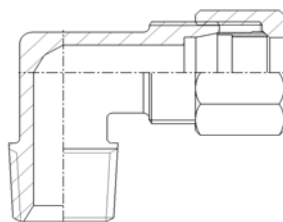
Taper Male Stud Elbow			
Tube diameter (mm)		BSPT Thread	Reference
L	6	1/8"	360100608
	8	1/8"	360100808
		1/4"	360100814
	10	1/4"	360101014
	12	3/8"	360101238
	15	1/2"	360101542
	18	1/2"	360101842
	22	3/4"	360102244
	28	1"	3601028100
	35	1"1/4	3601035114
42	1"1/2	3601042142	
S	6	1/4"	362100608
	8	1/4"	362100814
	10	3/8"	362101038
	12	3/8"	362101238
	14	1/2"	362101442
	16	1/2"	362101642
	20	3/4"	362102044
	25	1"	3621025100
	30	1"1/4	3621030114



Metric Taper Male Stud Elbow			
Tube diameter (mm)		Metric Thread	Reference
L	6	10 X 1	360480610
	8	12 X 1,5	360480812
	10	14 X 1,5	360481014
	12	16 X 1,5	360481216
	15	18 X 1,5	360481518
	18	22 X 1,5	360481822
S	6	12 X 1,5	362480612
	8	14 X 1,5	362480814
	10	16 X 1,5	362481016
	12	18 X 1,5	362481218
	14	20 X 1,5	362481420
	16	22 X 1,5	362481622



NPT Male Stud Elbow



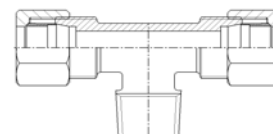
Tube diameter (mm)		NPT Thread	Reference
L	6	1/8"	360120608
	8	1/8"	360120808
		1/4"	360120814
	10	1/4"	360121014
	12	1/4"	360121214
		3/8"	360121238
	15	1/2"	360121542
	18	1/2"	360121842
	22	3/4"	360122244
	28	1"	3601228100
35	1"1/4	3601235114	
S	6	1/4"	362120614
	8	1/4"	362120814
	10	3/8"	362121038
	12	3/8"	362121238
	14	1/2"	362121442
	16	1/2"	362121642
	20	3/4"	362122044
	25	1"	3621225100
	30	1"1/4	3621230114
	38	1"1/4	3621238114

DIN L / DIN S Series

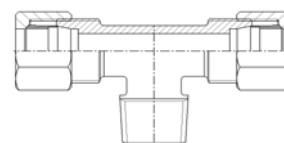


[Index](#)

Taper Male Branch tee			
Tube diameter (mm)		BSPT Thread	Reference
L	6	1/8"	360260608
	8	1/4"	360260814
	10	1/4"	360261014
	12	3/8"	360261238
	15	1/2"	360261542
	18	1/2"	360261842
	22	3/4"	360262244
	28	1"	3602628100
	35	1"1/4	3602635114
	42	1"1/2	3602642142
S	6	1/4"	362260614
	8	1/4"	362260814
	10	3/8"	362261038
	12	3/8"	362261238
	14	1/2"	362261442
	16	1/2"	362261642
	20	3/4"	362262044
	25	1"	3622625100
	30	1"1/4	3622630114
	38	1"1/2	3622638112



NPT Male Branch Tee			
Tube diameter (mm)		NPT Thread	Reference
L	6	1/8"	360270608
	8	1/4"	360270814
	10	1/4"	360271014
	12	3/8"	360271238
	15	1/2"	360271542
	18	1/2"	360271842
	22	3/4"	360272244
	28	1"	3602728100
	35	1"1/4	3602735114
	42	1"1/2	3602742142
S	6	1/4"	362270614
	8	1/4"	362270814
	10	3/8"	362271038
	12	3/8"	362271238
	14	1/2"	362271442
	16	1/2"	362271642
	20	3/4"	362272044
	25	1"	3622725100
	30	1"1/4	3622730114
	38	1"1/2	3622738142

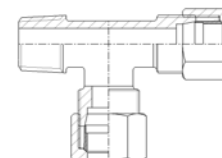


DIN L / DIN S Series

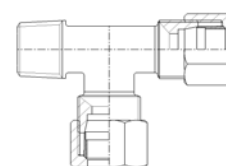


[Index](#)

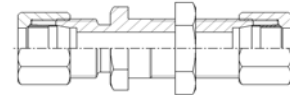
Taper Male Tee			
	Tube diameter (mm)	BSPT Thread	Reference
L	6	1/8"	360290608
	8	1/4"	360290814
	10	1/4"	360291014
	12	3/8"	360291238
	15	1/2"	360291542
	18	1/2"	360291842
	22	3/4"	360292244
	28	1"	3602928100
	35	1"1/4"	3602935114
	42	1"1/2"	3602942142
S	6	1/4"	362290614
	8	1/4"	362290814
	10	3/8"	362291038
	12	3/8"	362291238
	14	1/2"	362291442
	16	1/2"	362291642
	20	3/4"	362292044
	25	1"	3622925100
	30	1"1/4"	3622930114
	38	1"1/2"	3622938142



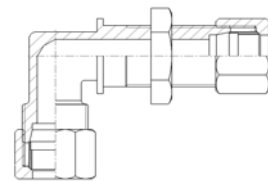
NPT Male Tee			
	Tube diameter (mm)	NPT Thread	Reference
L	6	1/8"	360280608
	8	1/4"	360280814
	10	1/4"	360281014
	12	3/8"	360281238
	15	1/2"	360281542
	18	1/2"	360281842
	22	3/4"	360282244
	28	1"	3602828100
	35	1"1/4"	3602835114
	42	1"1/2"	3602842142
S	6	1/4"	362280614
	8	1/4"	362280814
	10	3/8"	362281038
	12	3/8"	362281238
	14	1/2"	362281442
	16	1/2"	362281642
	20	3/4"	362282044
	25	1"	3622825100
	30	1"1/4"	3622830114
	38	1"1/2"	3622838142



Bulkhead straight Coupling		
Tube diameter (mm)		Reference
L	6	360150006
	8	360150008
	10	360150010
	12	360150012
	15	360150015
	18	360150018
	22	360150022
	28	360150028
	35	360150035
	42	360150042
S	6	362150006
	8	362150008
	10	362150010
	12	362150012
	14	362150014
	16	362150016
	20	362150020
	25	362150025
	30	362150030
	38	362150038



Bulkhead Elbow		
Tube diameter (mm)		Reference
L	6	360160006
	8	360160008
	10	360160010
	12	360160012
	15	360160015
	18	360160018
	22	360160022
	28	360160028
	35	360160035
	42	360160042
S	6	362160006
	8	362160008
	10	362160010
	12	362160012
	14	362160014
	16	362160016
	20	362160020
	25	362160025
	30	362160030
	38	362160038



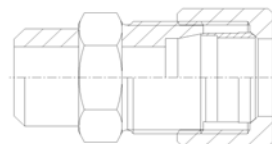
DIN L / DIN S Series



Index

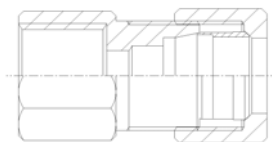
Stud Coupling To Solder

Tube diameter (mm)	Diameter (mm)	Reference	
L	6	10	360180610
	8	12	360180812
	10	14	360181014
	12	16	360181216
	15	19	360181519
	18	22	360181822
	22	27	360182227
	28	32	360182832
	35	40	360183540
	42	46	360184246
S	6	11	362180611
	8	13	362180813
	10	15	362181015
	12	17	362181217
	14	19	362181419
	16	21	362181621
	20	26	362182026
	25	31	362182531
	30	36	362183036
	38	44	362183844



Cylindric Female Stud Coupling

Tube diameter (mm)	BSPP Thread	Reference	
L	6	1/8"	360080608
		1/4"	360080614
	8	1/4"	360080814
	12	3/8"	360081238
		1/2"	360081242
	15	3/8"	360081538
		1/2"	360081542
	18	3/8"	360081838
		1/2"	360081842
	22	3/4"	360082244
28	1"	3600828100	
35	1 1/4"	3600835114	
42	1 1/2"	3600842142	
S	6	1/8"	362080608
		1/4"	362080614
	8	1/4"	362080814
	10	3/8"	362081038
	12	1/4"	362081214
		3/8"	362081238
		1/2"	362081242
	14	1/2"	362081442
	16	1/2"	362081642
		1/2"	362082042
	20	3/4"	362082044
		1"	3620825100
25	1"	3620825100	
30	1 1/4"	3620830114	

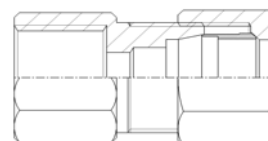


DIN L / DIN S Series

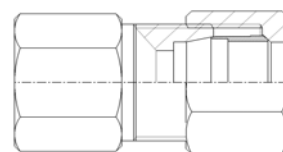


[Index](#)

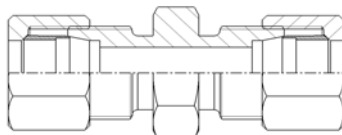
Metric Female Stud Coupling			
Tube diameter (mm)		Metric Thread	Reference
L	6	10 X 1	360470610
	8	12 X 1,5	360470812
	10	14 X 1,5	360471014
	12	16 X 1,5	360471216
		18 X 1,5	360471218
		20 X 1,5	360471220
	15	18 X 1,5	360471518
	18	22 X 1,5	360471822
	22	26 X 1,5	360472226
	28	33 X 2	360472833
	35	42 X 2	360473542
	42	48 X 2	360474248
S	6	12 X 1,5	362470612
	8	14 X 1,5	362470814
	10	16 X 1,5	362471016
	12	18 X 1,5	362471218
		20 X 1,5	362471220
	14	20 X 1,5	362471420
	16	22 X 1,5	362471622
	20	33 X 1,5	362472033
	25	33 X 2	362472533
	38	48 X 2	362473848



Gauge Female Stud Coupling			
Tube diameter (mm)		BSPP Thread	Reference
L	6	1/4"	360420614
	8	1/4"	360420814
	10	1/4"	360421014
	12	1/4"	360421214
		1/2"	360421242
S	6	1/2"	362420642
	8	1/2"	362420842
	10	1/2"	362421042
	12	1/2"	362421242
	14	1/2"	362421442

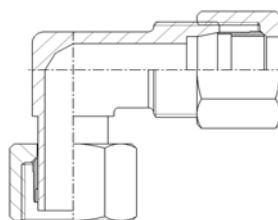


Straight Reducing Coupling



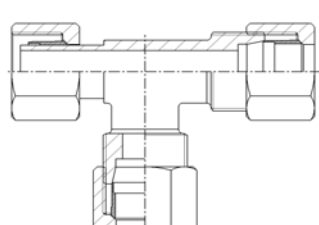
Tube diameter (mm)		Diameter (mm)	Reference
L	8	6	360040806
	10	6	360041006
		8	360041008
	12	8	360041208
		10	360041210
	15	10	360041510
		12	360041512
	18	12	360041812
		15	360041815
	22	15	360042215
		18	360042218
	28	18	360042818
		22	360042822
	35	28	360043528
42	28	360044228	
	35	360044235	
S	8	6	362040806
	10	8	362041008
	12	8	362041208
		10	362041210
	14	10	362041410
		12	362041412
	16	12	362041612
		14	362041614
	20	14	362042014
		16	362042016
	25	16	362042516
		20	362042520
	30	20	362043020
		25	362043025
38	30	362043830	

Swivelling Elbow

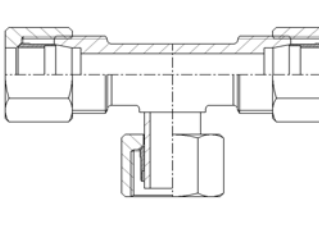


Tube diameter (mm)		Reference
L	6	360810006
	8	360810008
	10	360810010
	12	360810012
	15	360810015
	18	360810018
	22	360810022
	28	360810028
	35	360810035
	42	360810042
S	6	362810006
	8	362810008
	10	362810010
	12	362810012
	14	362810014
	16	362810016
	20	362810020
	25	362810025
	30	362810030
	38	362810038

Swivelling Tee		
Tube diameter (mm)	Reference	
L	6	360850006
	8	360850008
	10	360850010
	12	360850012
	15	360850015
	18	360850018
	22	360850022
	28	360850028
	35	360850035
	42	360850042
S	6	362850006
	8	362850008
	10	362850010
	12	362850012
	14	362850014
	16	362850016
	20	362850020
	25	362850025
	30	362850030
	38	362850038



Swivelling Tee		
Tube diameter (mm)	Reference	
L	6	360840006
	8	360840008
	10	360840010
	12	360840012
	15	360840015
	18	360840018
	22	360840022
	28	360840028
	35	360840035
	42	360840042
S	6	362840006
	8	362840008
	10	362840010
	12	362840012
	14	362840014
	16	362840016
	20	362840020
	25	362840025
	30	362840030
	38	362840038



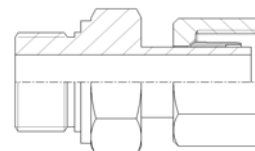
DIN L / DIN S Series



[Index](#)

Cylindric Swivelling Male Coupling

Tube diameter (mm)	BSPB Thread	Reference	
L	6	1/8"	360690608
	8	1/4"	360690814
	10	1/4"	360691014
	12	1/4"	360691214
		3/8"	360691238
	15	1/2"	360691542
	18	1/2"	360691842
	22	3/4"	360692244
	28	1"	3606928100
	35	1"1/4	3606935114
42	1"1/2	3606942142	
S	6	1/4"	362690614
	8	1/4"	362690814
	10	3/8"	362691038
	12	3/8"	362691238
		1/2"	362691242
	14	1/2"	362691442
	16	1/2"	362691642
		3/4"	362691644
	20	3/4"	362692044
	25	1"	3626925100
	30	1"	3626930100
		1"1/4	3626930114



NPT Swivelling Male Coupling

Tube diameter (mm)	NPT Thread	Reference	
L	6	1/8"	360410608
	8	1/4"	360410814
	10	1/4"	360411014
	12	1/4"	360411214
		3/8"	360411238
		1/2"	360411242
	15	3/8"	360411538
		1/2"	360411542
	18	1/2"	360411842
	22	3/4"	360412244
	28	1"	3604128100
	35	1"1/4	3604135114
42	1"1/2	3604142112	
S	6	1/4"	362410614
	8	1/4"	362410814
	10	1/4"	362411014
		3/8"	362411038
	12	1/4"	362411214
		3/8"	362411238
		1/2"	362411242
	14	1/2"	362411442
	16	1/2"	362411642
	20	3/4"	362412044
	25	1"	3624125100
	30	1"1/4	3624130114
38	1"1/2	3624138142	

