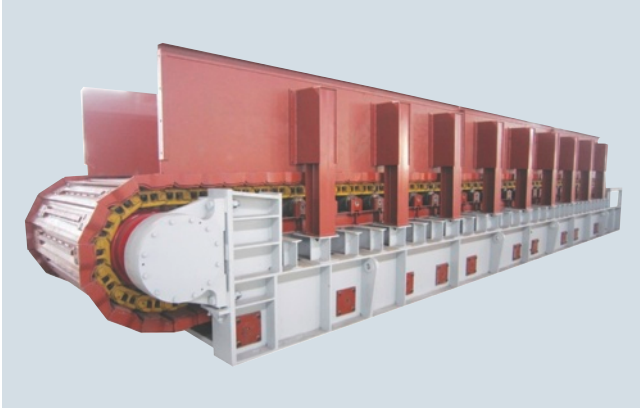


Overview



SITRANS WW500 is a heavy duty high-capacity apron weighfeeder used for extremely harsh applications.

Benefits

- Rugged, durable design for heavy-duty applications
- Handles medium-to high-capacity loads
- Standard mild steel open or enclosed construction
- Heavy-duty chain and sprockets for reliable conveying
- Easy to access maintenance and adjustment components
- Spring tensioned chain stretchers

Application

SITRANS WW500 is designed for industrial applications such as cement, steel, and other heavy-duty industries that convey clinker, granulated blast furnace slag or petroleum coke.

Robust heavy duty components ensure a long life of reliable feeding and control. Field tested and proven in hundreds of applications, it enhances profitability by ensuring accuracy, reducing downtime, and improving accountability and record keeping. The unique weigh system reduces dead load and applies live load directly to load cells for accurate measurement, without the use of check rods, pivots or bearings. The four load cells are mounted below the apron pans to ensure protection and help with heat dissipation.

It is available in a variety of lengths to suit existing application requirements and apron widths up to 2 500 mm (98 inch), several different inlet configurations and materials of construction. It can be configured to suit various applications.

SITRANS Weighfeeders

SITRANS WW500

Introduction

Technical specifications

SITRANS WW500	
Mode of operation	
Measuring principle	Strain gauge load cells and digital speed sensor
Typical application	Industrial and process applications in feeding, blending or rationing in cement manufacturing
Measuring accuracy	
Accuracy ¹⁾	± 2 % or better
Repeatability	± 0.1 %
Specified range	33 ... 100 % based on speed
Design rate range	10 ... 2 000 t/h (11 ... 2200 STPH)
Max volumetric flow	1 500 m ³ /h (53 000 ft ³ /h)
Medium conditions	
Material temperature	-40 ... +150 °C (-40 ... +300 °F)
Operating temperature	-40 ... +65 °C (-40 ... +150 °F)
Material	
Mild steel with abrasion resistant contact parts optional	
Load cells	
Construction	17-4 PH (1.4568) stainless steel or nickel plated alloy steel
Degree of protection	IP67
Excitation	10 V DC nominal, 15 V DC maximum
Output	2 mV/V
Non-linearity	± 0.02 % of rated output
Non-repeatability	± 0.01 % of rated output
Capacity	50, 100, 250, 500, 750, 1 000 lb
Overload	150 % of rated capacity
Temperature	<ul style="list-style-type: none"> • Operating range: -40 ... +65 °C (-40 ... +150 °F) • Compensated: -10 ... +40 °C (15 ... 104 °F)

SITRANS WW500	
Speed sensor	
WS300 Output	See page 4/45
Framework	Painted structural steel
Sprockets	
Heavy duty chain sprockets for positive apron conveying	
Pan support	
Heavy-duty steel rollers	
Pan speed	
0.01 ... 0.25 m/s (2 ... 50 fpm)	
Bearings	
Heavy duty pillow block style on head sprockets	
Heavy duty take up style on tail sprockets	
Chain	
Per ISO1977:2000 and conforming to regulations of GB/T8350-2003	
Chain tension	
<ul style="list-style-type: none"> • Screw type, with take up bearings • Spring tensioned 	
Drive motor	
AC, TEFC, 4:1 CT inverter duty, drive motor with direct coupled flange mounted hollow bore KA gear reducer, 1.2 service factor min.	
Shipping weight	
900 kg (2 000 lb) minimum	
Approvals	
<ul style="list-style-type: none"> • CE on all electrical components • Hazardous approvals available on electrical components <p>Note: Weighfeeder as a whole is not approved for hazardous locations, only electrical components.</p>	

¹⁾ Accuracy subject to: On factory approved installations, the weighfeeder system's totalized weight will be within the specified accuracy when compared to a known weighed material test sample.
The test rate must be within the specified range of the design capacity and held constant for the duration of the test.
The minimum material test sample must be equivalent to a sample obtained at the test flow rate for three revolutions of the belt or at least ten minutes running time, whichever is greater.

Selection and ordering data
SITRANS WW500

SITRANS WW500 is a heavy duty high-capacity apron weighfeeder used for extremely harsh applications.

Please contact factory
factorysupport.smpi@siemens.com

Operating instructions

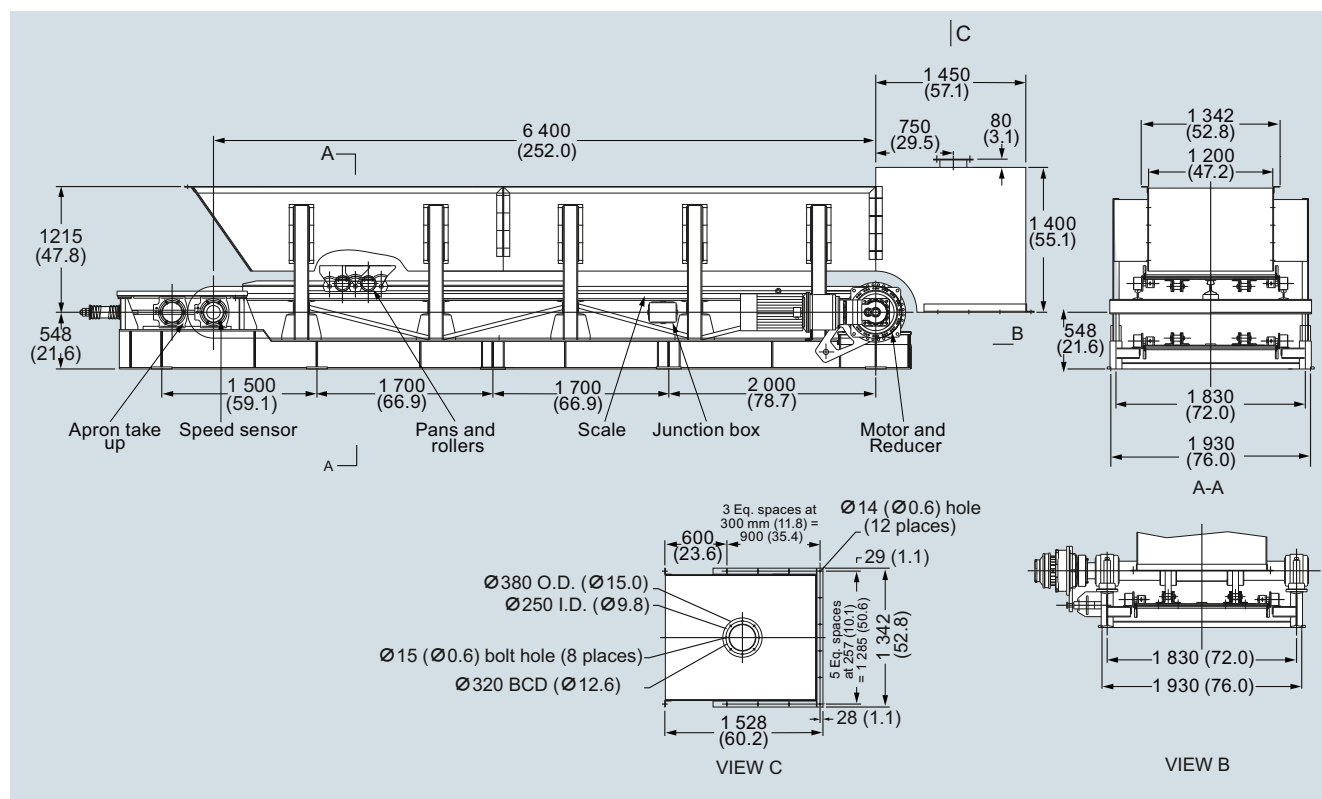
English

Note:

The operating instructions should be ordered as a separate item on the order. This device is shipped with the Siemens Milltronics manual DVD containing the complete operating instructions library.

Article No.

A5E34739854

Dimensional drawings


SITRANS WW500, dimensions in mm (inch)