

# FM2-LE™ Fan/Filter Module

## INSTALLATION, OPERATION, AND MAINTENANCE INSTRUCTIONS

### Principle of Operation

The FM2-LE fan/filter module is designed to create a clean downflow air supply where use of conventional ducted modules is impractical, or where the air supply has insufficient static pressure to move the air through a HEPA filter.

### Method of Operation

Air circulation is maintained by using a backward curved motorized impeller. The speed of the impeller can be adjusted by the solid-state speed control mounted on top of the housing. Performance is based on the rated airflow for the unit.

### Installation

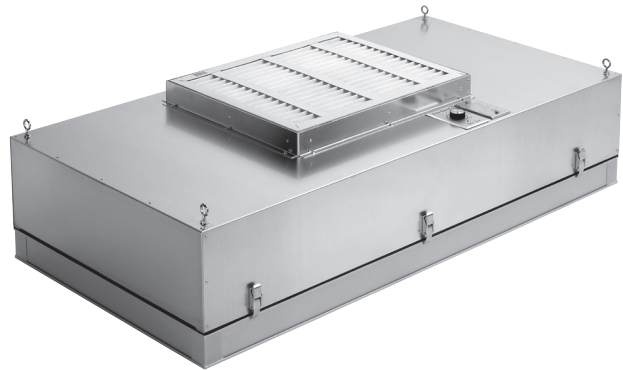
Modules may be suspended on either flexible or rigid hangers. Four eyebolts are provided at the top of the module. If the module is interfaced in a suspended ceiling system, the FM2-LE module must be independently suspended. The module should have at least five inches of clearance from any obstacles above the prefilter. The FM2-LE module should only be handled around the exterior frame. Do not apply pressure to the protective filter screen. Failure to follow these instructions could result in a puncture in the filter media.

### Cleaning and Maintenance

Periodic cleaning of all fan equipment is strongly recommended. A program of preventive maintenance will increase motor life. Set up a periodic maintenance schedule to replace prefilters.

### HEPA Filter Replacement

Replacement of the HEPA filter is dependent on the condition of the air being filtered. The gasketed filter is attached to the module with spring latches. Disassemble and reassemble in similar fashion without the use of tools.



### Wiring

Run the fused power wiring to the utility box located on the top of the module. Any additional safety switch needed between the FM2-LE module and power source to meet code must be wired by others. The power to the module is controlled by the solid-state speed control.

**WARNING:** Unit should be installed by a qualified electrician, technician, or electrical maintenance personnel familiar with its operation and the hazards involved. Installation should be done in accordance with the National Electrical Code and other local codes that apply. The unit must be grounded when installed. Failure to follow these instructions could result in electrical shock or a fire hazard.

### Replacement HEPA Filter Information

Style Code	Part Number	Actual Filter Size
24A89A2T1H2	577-890-124	23 $\frac{5}{8}$ " x 47 $\frac{5}{8}$ " x 2 $\frac{3}{4}$ "
29A89A2T1H2	905-251-409	23 $\frac{5}{8}$ " x 35 $\frac{5}{8}$ " x 2 $\frac{3}{4}$ "
26A89A2T1H2	577-890-126	23 $\frac{5}{8}$ " x 23 $\frac{5}{8}$ " x 2 $\frac{3}{4}$ "

