



Product Data Submittal
Fulton Models: ICS/FB-A and ICX/FB-F

Fulton Gas & Oil Fired
Vertical Tubeless
Steam Boilers

(Low Emissions Burner)

Dimensions

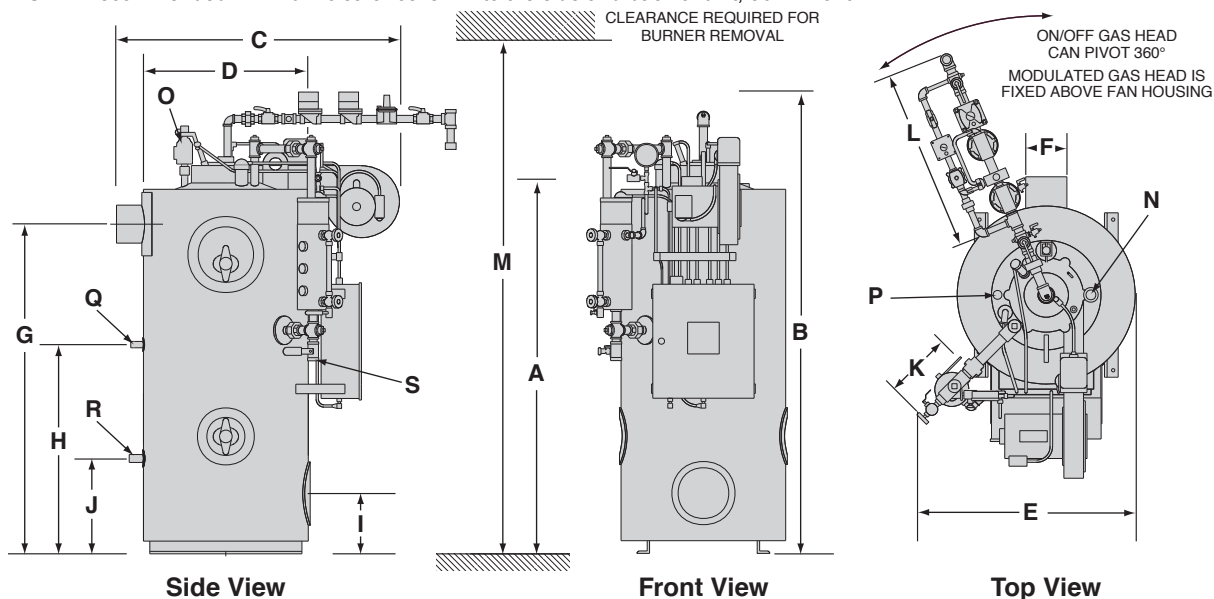
| Standard Models ICS/FB-A Models ICX/FB-F | | 9.5 | 10 | 15 | 20 | 25 | 30 |
|--|-----|-------|------|------|------|------|-------|
| Unit Size: | BHP | 9.5 | 10 | 15 | 20 | 25 | 30 |
| A. Boiler Height | IN | 67.5 | 63.5 | 69 | 72.5 | 74.5 | 82 |
| | MM | 1715 | 1613 | 1753 | 1842 | 1892 | 2083 |
| B. Boiler Height With Trim* & Fuel Train Assembly | IN | 85 | 80.5 | 93 | 97 | 97 | 106.5 |
| | MM | 2159 | 2045 | 2362 | 2364 | 2364 | 2705 |
| C. Overall Depth Stack to Burner Fan Housing | IN | 44 | 48 | 50 | 61 | 59 | 65.5 |
| | MM | 1118 | 1219 | 1270 | 1549 | 1499 | 1664 |
| D. Boiler Diameter | IN | 26 | 28 | 30 | 39 | 39 | 46 |
| | MM | 660 | 710 | 760 | 990 | 990 | 1170 |
| E. Overall Width with Water Column | IN | 33 | 33.5 | 35.5 | 43 | 43 | 49 |
| | MM | 838 | 851 | 902 | 1091 | 1091 | 1244 |
| F. Flue Outlet Diameter | IN | 6 | 6 | 8 | 10 | 10 | 12 |
| | MM | 152 | 152 | 203 | 254 | 245 | 305 |
| G. To Center of Flue Outlet | IN | 61.5 | 57.5 | 63 | 66 | 68 | 73 |
| | MM | 1562 | 1465 | 1600 | 1675 | 1728 | 1854 |
| H. Feedwater Inlet | IN | 33 | 33 | 33 | 34 | 34 | 34 |
| | MM | 838 | 838 | 838 | 865 | 865 | 865 |
| I. Handholes | IN | 18.5 | 18.5 | 19.5 | 19.5 | 19.5 | 19.5 |
| | MM | 470 | 470 | 495 | 495 | 495 | 495 |
| J. Blowdown Outlet | IN | 15.25 | 15 | 15 | 16.5 | 16.5 | 16.5 |
| | MM | 387 | 381 | 381 | 420 | 420 | 420 |
| K. Water Column Extension | IN | 14 | 14 | 14 | 14 | 14 | 14 |
| | MM | 355 | 355 | 355 | 355 | 355 | 355 |
| L. Gas Train Extension (CSD-1) | IN | 25 | 21.5 | 20.5 | 25 | 25 | 27 |
| | MM | 635 | 546 | 521 | 635 | 635 | 686 |
| M. Clearance Required for Burner Removal | IN | 94 | 86 | 108 | 111 | 110 | 121 |
| | MM | 2388 | 2184 | 2743 | 2819 | 2794 | 3073 |

Weights

| Approx. Shipping Weight | LB | 2050 | 2000 | 2400 | 3750 | 3690 | 5450 |
|-------------------------|----|------|------|------|------|------|------|
| | KG | 930 | 907 | 1089 | 1701 | 1674 | 2472 |

All measurements are subject to +/- 0.5". Please refer to component drawings for actual measurements.

NOTE: Recommended minimum clearance is 24" to the side and back of unit; 36" in front



Specifications

| Models ICS/ICX/FB | | 9.5 | 10 | 15 | 20 | 25 | 30 |
|---|----------------|------------|-------------|--------------|------------------------|------------------------|------------------------|
| Boiler Connections | | | | | | | |
| N. Steam Outlet 15 PSI (9.5 HP 100 PSI) | | N/A | 1.5" NPT | 2" NPT | 3" CL150# Flange | 3" CL150# Flange | 3" CL150# Flange |
| N. Steam Outlet 150 PSI | | 1" NPT | 1" NPT | 1.25" NPT | 1.5" NPT | 2" NPT | 2" NPT |
| O. Safety Valve Outlet 15 PSI | IN MM | N/A | 0.75 19 | 1 32 | 1.5 38 | 1.5 38 | 1.5 38 |
| O. Safety Valve Outlet 150 PSI+ (9.5 HP 100 PSI) | IN MM | 1 25 | 1 25 | 1 25 | 1 25 | 1 25 | 1 25 |
| P. Safety Valve Inlet 15 PSI++ | IN MM | N/A | 0.75 19 | 1 25 | 1.25 32 | 1.25 32 | 1.25 32 |
| P. Safety Valve Inlet 150 PSI (9.5 HP 100 PSI) | IN MM | 0.75 19 | 0.75 19 | 0.75 19 | 0.75 19 | 0.75 19 | 0.75 19 |
| Q. Feedwater Inlet | IN MM | 1 25 | 1 25 | 1 25 | 1 25 | 1 25 | 1 25 |
| R. Blowdown Outlet | IN MM | 1 25 | 1 25 | 1 25 | 1.25 32 | 1.25 32 | 1.25 32 |
| S. Water Column Blowdown | IN MM | 1 25 | 1 25 | 1 25 | 1 25 | 1 25 | 1 25 |
| Ratings* (Sea level to 3000 ft.) | | | | | | | |
| Output | | | | | | | |
| 1000 BTU/HR | | 318 | 335 | 503 | 670 | 838 | 1005 |
| 1000 KCAL/HR | | 80.1 | 84.4 | 127 | 169 | 211 | 253 |
| Steam Output | | | | | | | |
| LB/HR | | 328 | 345 | 518 | 690 | 863 | 1035 |
| KG/HR | | 149 | 157 | 235 | 313 | 392 | 470 |
| Approximate Fuel Consumption at Rated Capacity+++ | | | | | | | |
| Natural Gas (ICS) | FT3/HR | 398 | 419 | 628 | 837 | 1047 | 1256 |
| (9" - 13" w.c. req'd) | M3/HR | 11.3 | 11.9 | 17.8 | 23.7 | 29.7 | 35.4 |
| Natural Gas (ICX) | FT3/HR | 384 | 403 | 606 | 807 | 1009 | 1210 |
| (9" - 13" w.c. req'd) | M3/HR | 10.8 | 11.4 | 17.2 | 22.9 | 28.6 | 34.3 |
| Natural Gas Boiler | IN | 1 | 1 | 1 | 1.25 | 1.25 | 1.5 |
| Connection Size (Std CSD-1) | MM | 25 | 25 | 25 | 32 | 32 | 38 |
| Oil Inlet Size | IN | 1/4 | 1/4 | 1/4 | 1/4 | 1/4 | 1/4 |
| | MM | 6 | 6 | 6 | 6 | 6 | 6 |
| Burner | 3450 RPM/60 CY | | | | | | |
| Motor HP | 2850 RPM/50 CY | .75 | .75 | 1.5 | 1.5 | 1.5 | 1.5 |
| Electric Power Requirements - Burner Only (in Amps) *** | | | | | | | |
| 120V,60 CY, 1 Phase | | 9.2 | 9.2 | -- | -- | -- | -- |
| 240V, 50/60 CY, 1 Phase | | 4.6 | 4.6 | 8.9 | 8.9 | 8.9 | 8.9 |
| 208V, 50/60 CY, 3 Phase | | 3.1 | 3.1 | 4.4 | 4.4 | 4.4 | 4.4 |
| 240V, 50/60 CY, 3 Phase | | 2.8 | 2.8 | 4.2 | 4.2 | 4.2 | 4.2 |
| 480V, 50/60 CY, 3 Phase | | 1.4 | 1.4 | 2.1 | 2.1 | 2.1 | 2.1 |
| Water Content | | | | | | | |
| | U.S. GAL | 16 | 24 | 39 | 77 | 82 | 170 |
| | LITERS | 61 | 91 | 148 | 292 | 311 | 644 |

Specifications and Dimensions are approximate. We reserve the right to change specifications and/or dimensions. + High pressure boilers purchased with low pressure openings may have larger than specified opening sizes, consult factory for correct opening sizes. ++ 60 HP has two safety valves when operating on low pressure.

+++Consumption based on Natural Gas 1000 BTU/ft.³. *All ratings from 0 PSIG and at 212 degrees F. *** Control circuit electrical requirement will vary with the system voltage, please consult factory. --Consult factory.

-The ICS/ICX Low Emissions boiler is available in ASME Section I only. High pressure vessels with low pressure openings are available.



The Fulton Companies
972 Centerville Road
Pulaski, NY 13142
Call 315-298-5121
Fax 315-298-6390
www.fulton.com