



Better herd performance for improved profitability

For years, AfiFarm software has given dairy farmers the tools for better control over the farm, for more effective parlor management to improve herd health, increase productivity and increase profitability.

As technology continues to evolve, Afimilk announces its new and comprehensive AfiFarm 5 software release, integrating new technologies and high-performance features to keep your entire operation running smoothly and productively.

- Around-the-clock heat alert service by AfiAct II
- Updates and alerts anytime, anywhere
- Real-time calving alert service
- Easier tag assignment to cow during milking
- Better, easier monitoring with AfiControl
- Lifetime feeding management in one simple screen



Around-the-clock heat detection by AfiAct II



Heat Indication Screen

AfiFarm 5 integrates AfiAct II, the industry's most accurate heat detection software that sets a new standard for heat detection sensitivity and supports time-sensitive breeding, multiple times per day. Heat profiles are presented in an easy-to-read format. AfiAct II also delivers accurate heat detection in stanchion barns and pastures.



Updates and alerts anytime, anywhere

AfiFarm online services:
Heat detected
Animal: **3346**
Animal: **7622**
Animal: **6481 (h)**

Heat Detection Alert

AfiFarm online services:
System alert
Stall: **18**
Milk meter disconnected.
Recheck connections or contact technical support.

System Alert

With AfiFarm 5, you can stay updated 24/7/365 with alerts and notifications on your computer or e-mails/messages on your smartphone, tablet, or other device. AfiFarm 5 provides you and your service provider with greater serviceability.

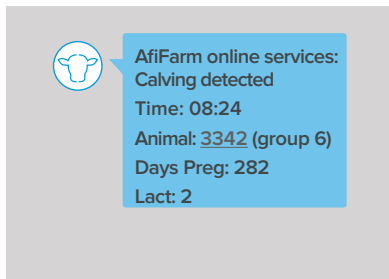


Vital know-how in every drop | www.afimilk.com





Real-time calving alert service



Calving Alert

Powered by advanced technologies and algorithms, *AfiFarm 5's* calving alert service is based on 24/7 cow-behavior monitoring.

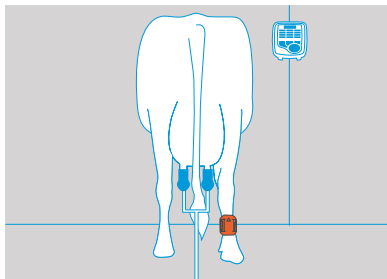
AfiFarm 5 sends detailed calving alerts and alerts about prolonged calving events.

Timely calving indications help better handling of your animals throughout the calving process.

A monitoring tool presents calving expected in the upcoming hours.



Easier tag assignment to cow during milking



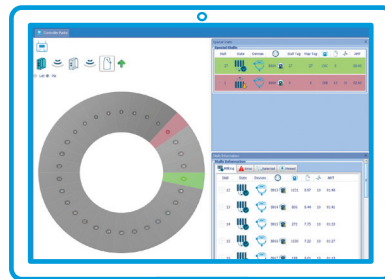
Tag Assignment during Milking

Assigning ID tag numbers to the animals is a detail-focused task, requiring accurate listings and software entries. Since tags are primarily attached to cows in the parlor, *AfiFarm 5* supports a new, semi-automatic procedure that allows tag assignment during milking.

When an unlisted tag is detected in the parlor, you type the cow number on the keypad of the milk meter. *AfiFarm 5* then automatically pairs it with the tag identified in the stall.



Better, easier monitoring with Aficontrol



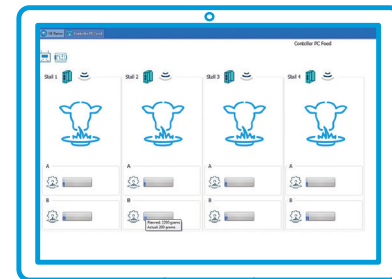
AfiControl Dashboard

From *AfiControl's* central dashboard, you can monitor and control system components, get milking rates and follow milking progress. You can also use sort and weight-monitoring screens and track your feeding system from the optional feed monitor.

AfiControl synchronizes with every tag and milk meter — and the entire parlor — for greater usability of the *Afimilk* system.



Lifetime feeding management in one simple screen



AfiControl Feed Plan Interface

AfiFarm 5's simple feed plan interface lets you easily develop and monitor long-term individual feeding plans. It features an online feed monitor, either as an integrated or stand-alone software module.

Additional features of Afifarm 5

- Supports advanced rotary parlor operations (2nd rotations, retention bar, teat spray)
- Optimized wash-monitoring alerts
- Option for stand-alone *AfiAct II* system
- Optional stand-alone *AfiFeed* (for integration with *AfiAct II*)
- All the valuable tools from previous *AfiFarm* releases optimized for improved usability
- Connects via USB or WiFi
- Provided on USB flash drive